

# TerioStation Installation Guide



# Preparing for installation

1

## Checking the printer's IP address

Use the printer to check the IP address.

---

2

## Checking the printer driver installation

Use a computer to check the printer driver.

---

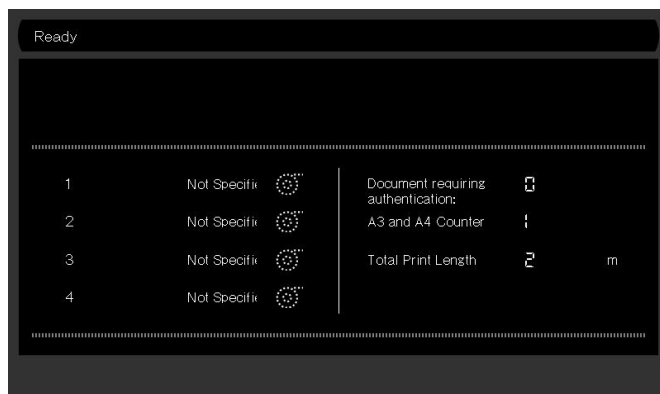
3

## Checking the Adobe Reader installation

# Checking the printer's IP address

1

Confirm that printer has been switched on and is running.



\*"Ready" is displayed on screen.

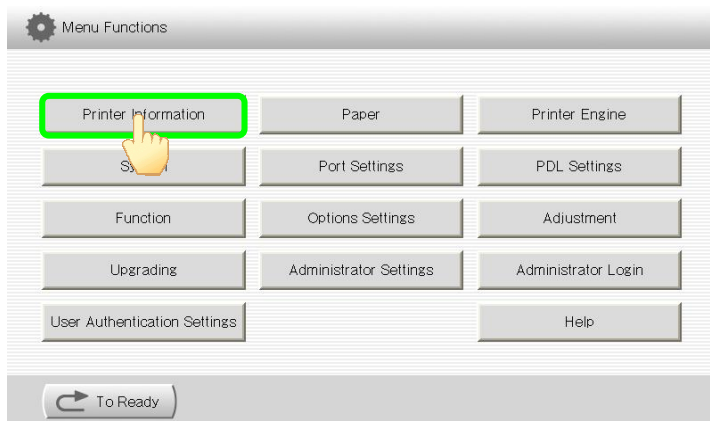
2

On the operation panel, press **MENU**.



3

On the screen, press **Printer Information**.



4



**A** Used on page 12.

Record the address in advance

0  0  0  0

*See Appendix 1*

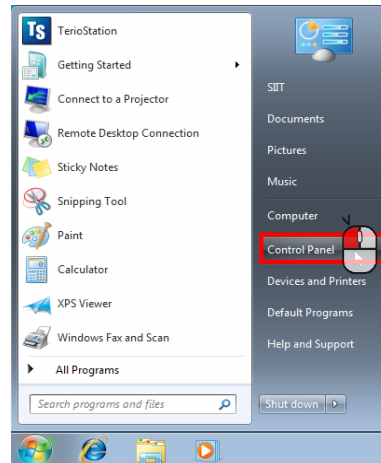
\*  Press (illust) to return to the previous screen.

# Checking the printer driver installation

1



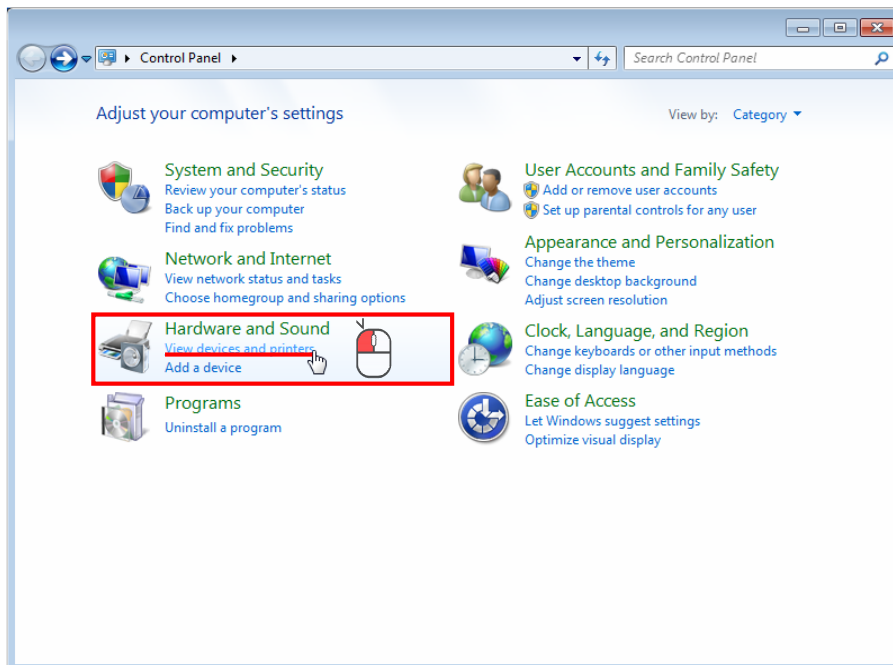
Click (illust).



Click Control Panel.

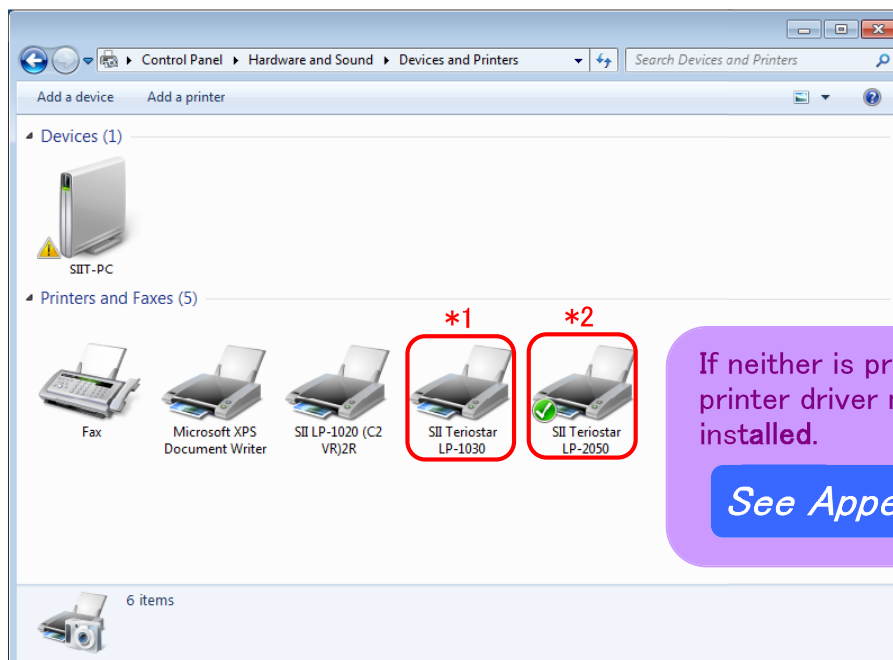
2

The following window appears. Click View devices and printers.



3

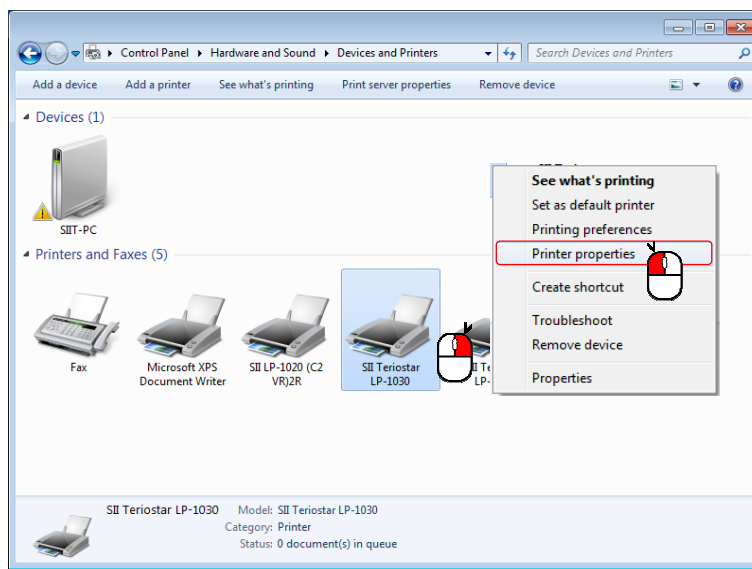
Check the icons. \*1 OKITerioStar LP-1030 or \*2 OKITerioStar LP-2050



If neither is present, the printer driver must be installed.

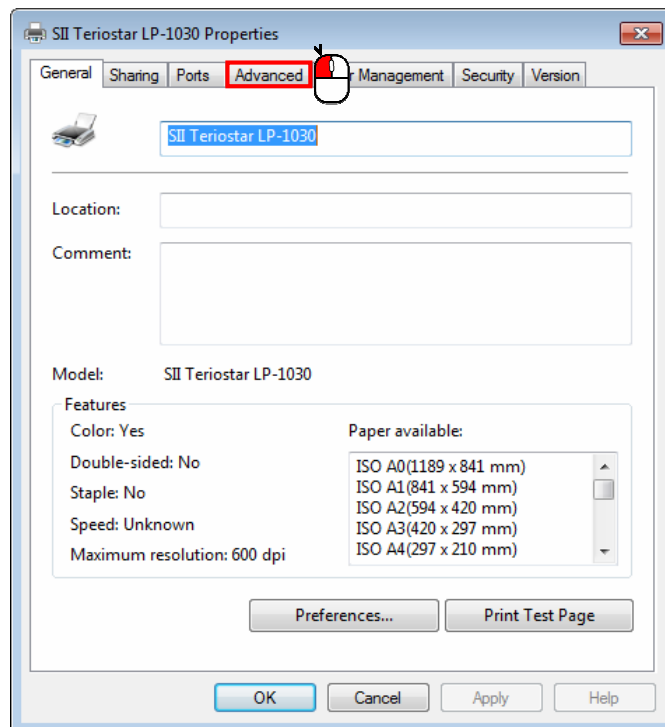
See Appendix 2

4



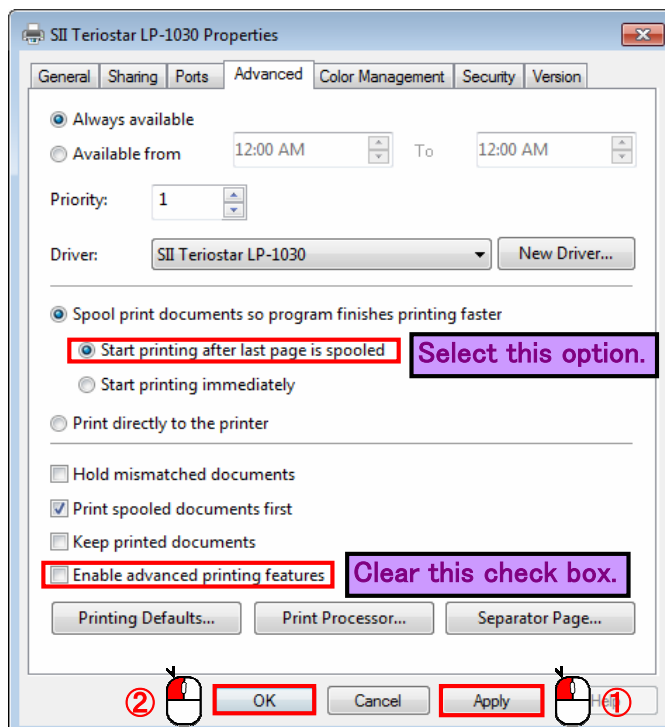
Right-click the driver of the printer to be used.  
Click **Printer properties**.

5



Click the **Advanced** tab.

6

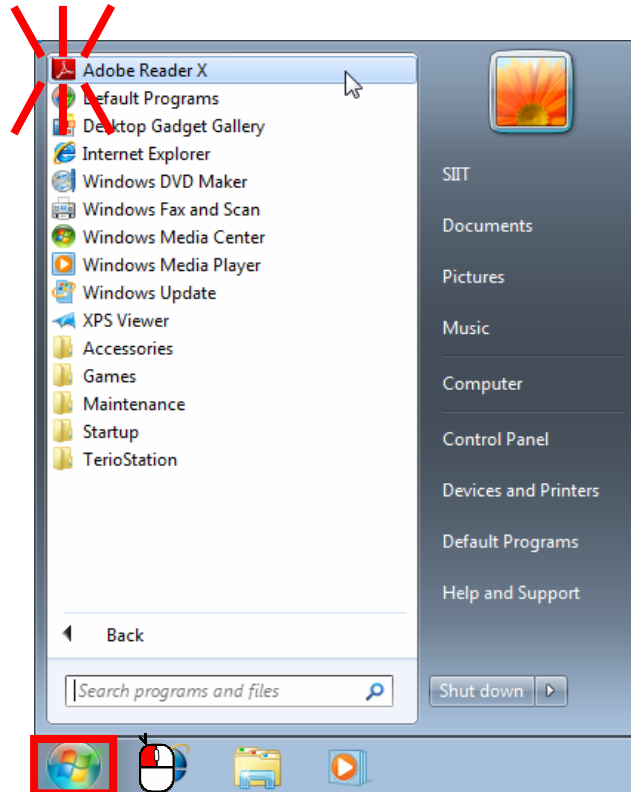


After completing the changes, click **Apply** ①, and then click **OK** ② to complete the procedure.

# Checking the Adobe Reader installation

1

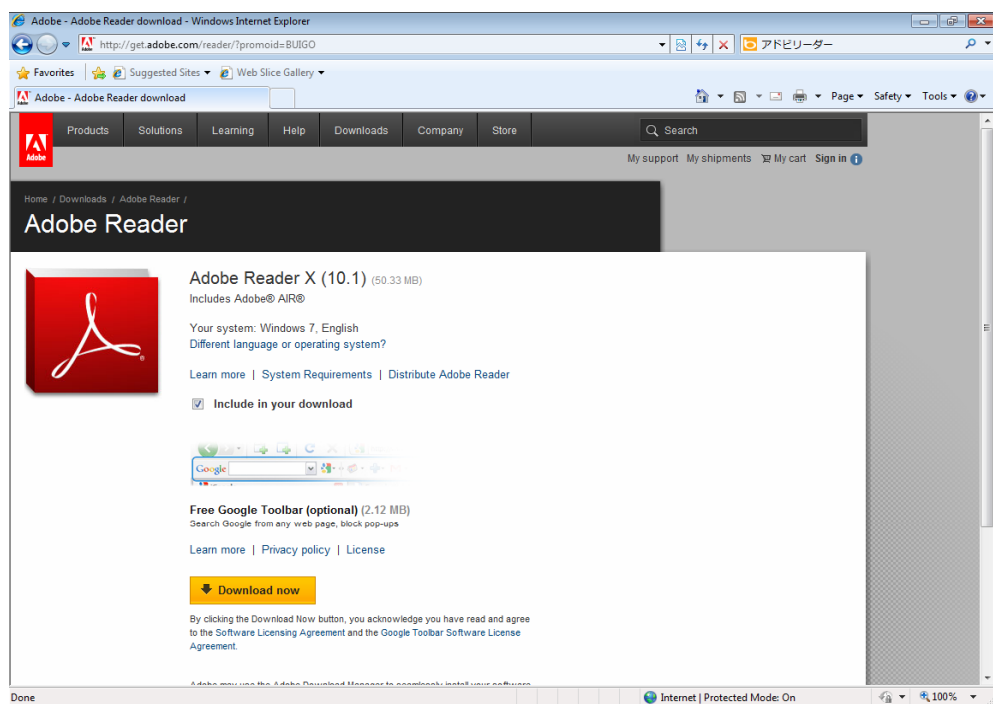
Confirm that the following icon (Adobe Reader) is present.



2

If Adobe reader is not installed, download it from the following site, and then install it.

<http://get.adobe.com/reader/>



# Installing TerioStation

## 1

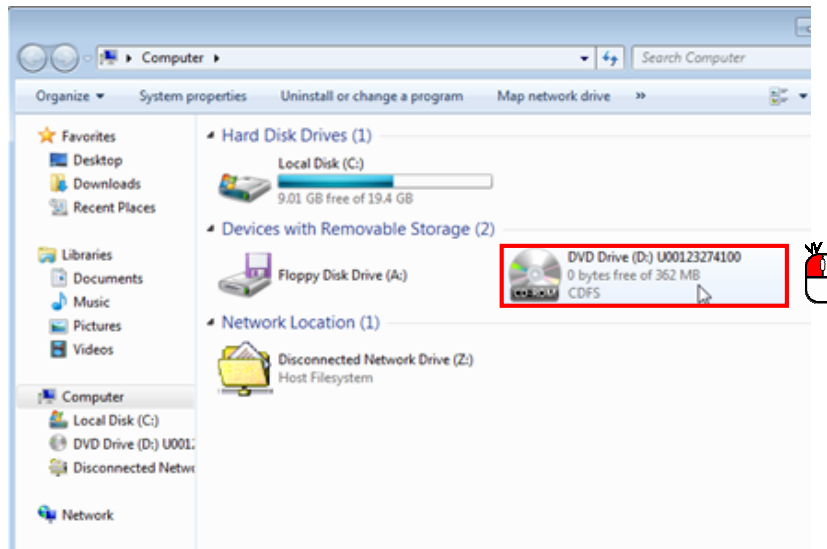
### Installing TerioStation

---

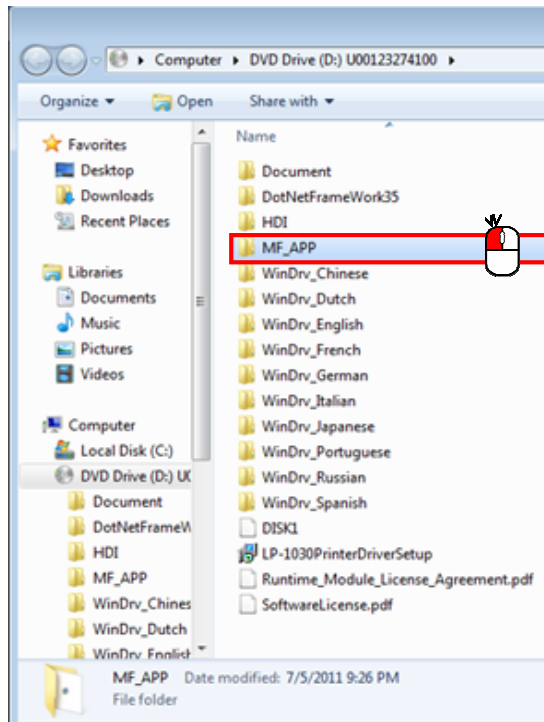
# Installing TerioStation

# 1

Insert the installation CD into the drive. Double-click the drive folder.

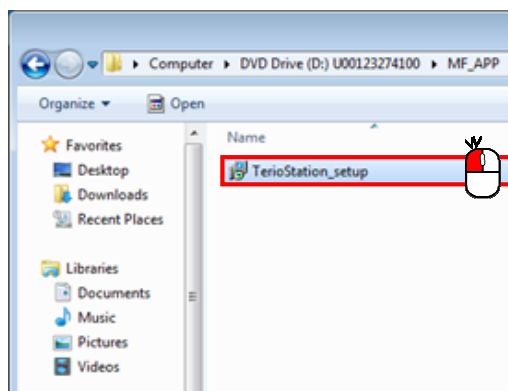


# 2



Inside the folder, double-click the folder named **MF APP**.

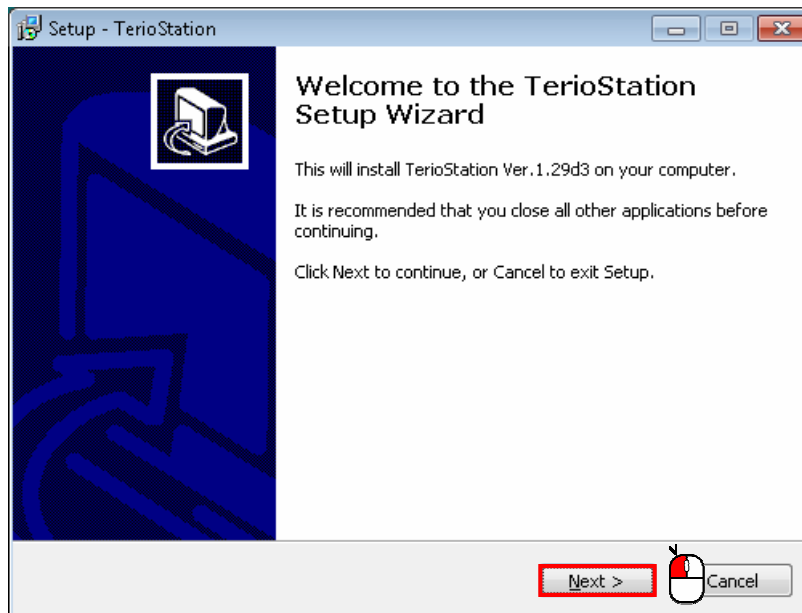
# 3



Double-click the file named **TerioStation\_setup.exe**.

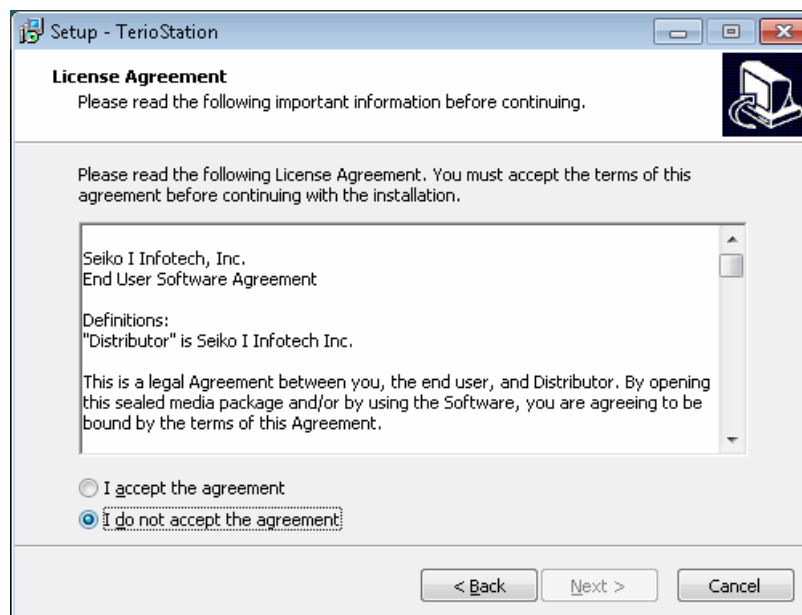


4

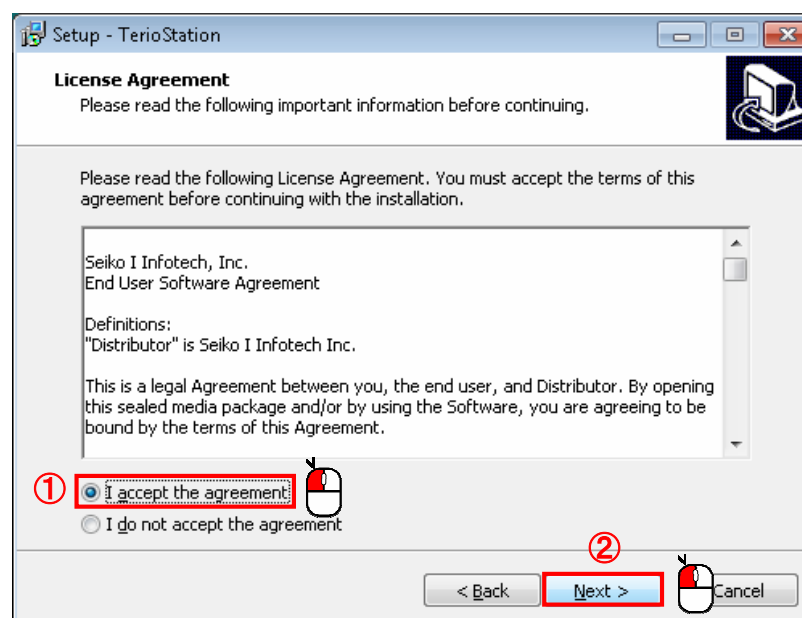
Click **Next**.

5

The following window appears.

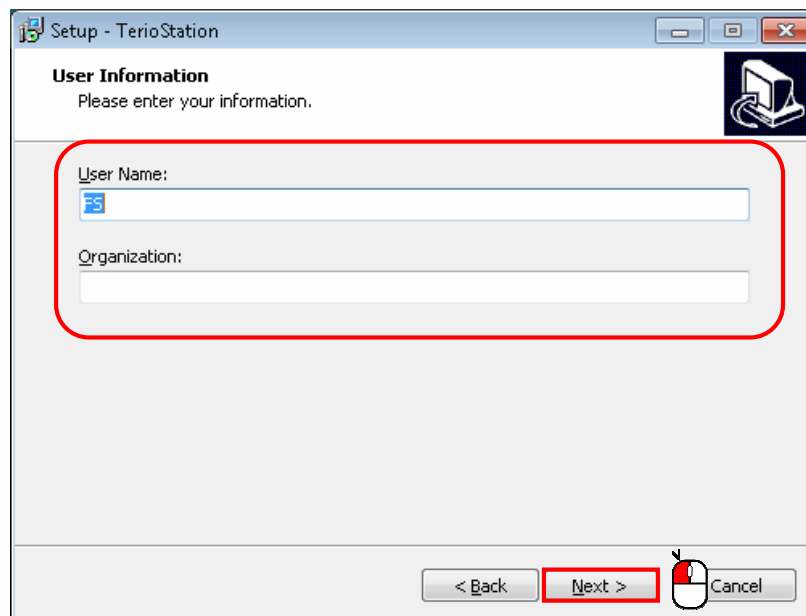


6

Select **I accept the agreement** ①, and then click **Next** ②.

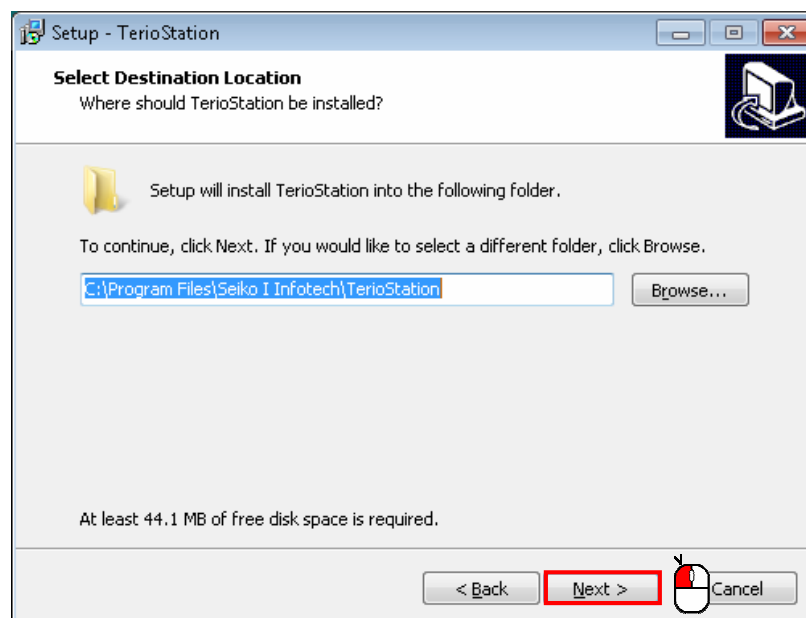
7

Enter a **user name** and **organization** of your choosing, and then click **Next**.



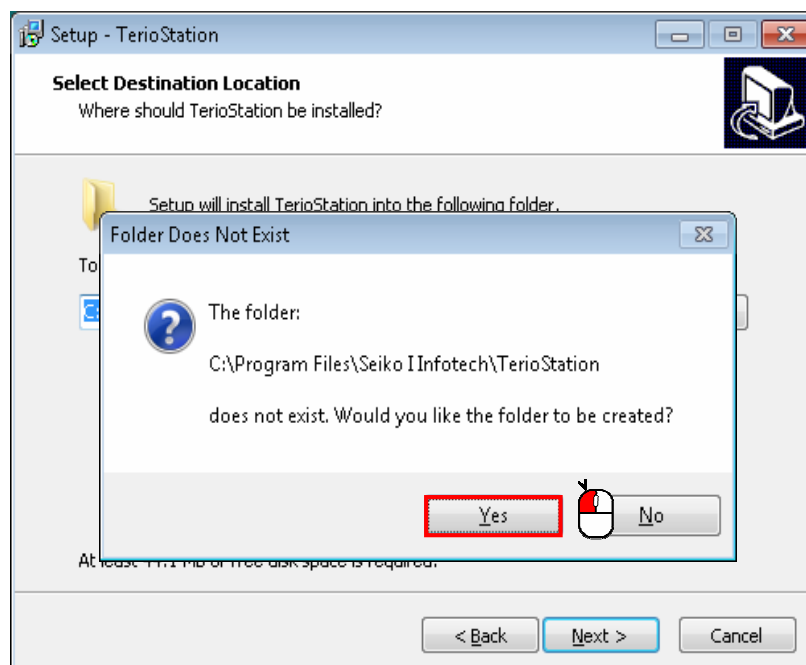
8

Click **Next**.



9

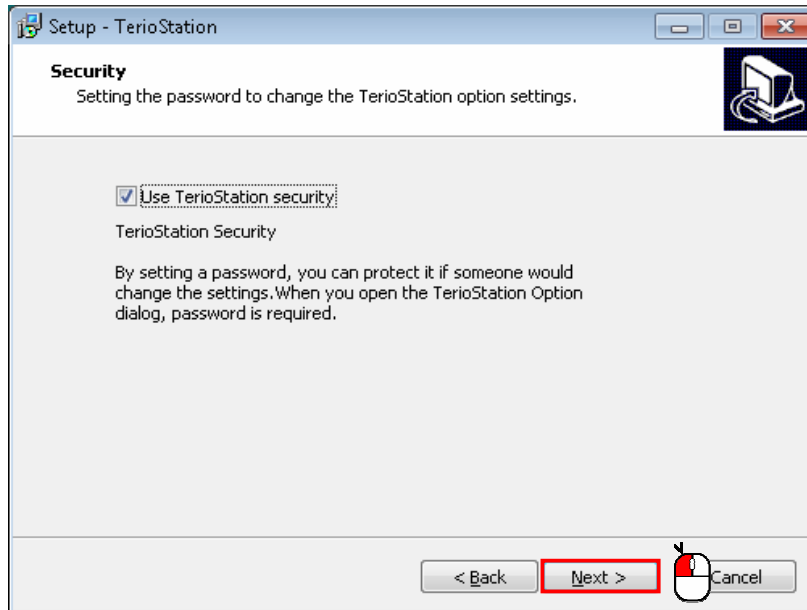
Click **Yes**.



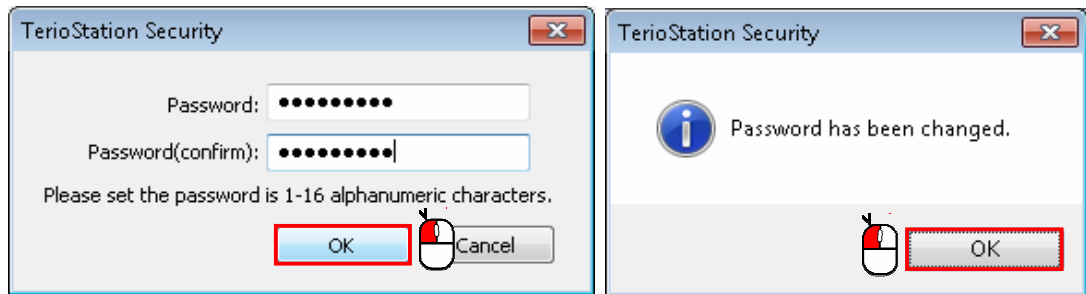
**\*Important\***

TerioStation has a security function with a password that prevent the settings to be easily changed. This security function should be used in most situations.

10-1



10-2

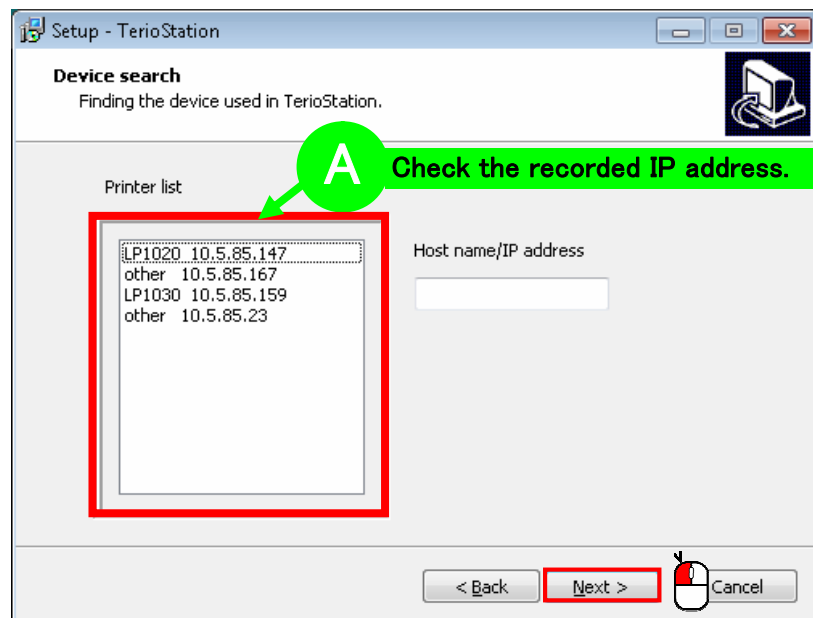


**\*Important\***

TerioStation must be reinstalled in the following situations:

- You want to stop using the password function after setting a password
- You want to start using the password function after not setting a password

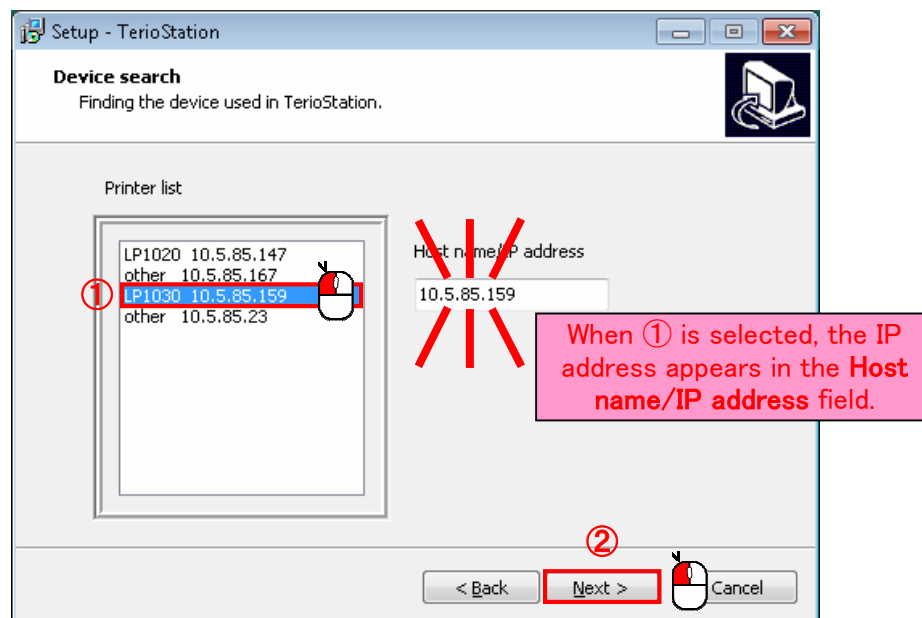
11

Click **Next**.

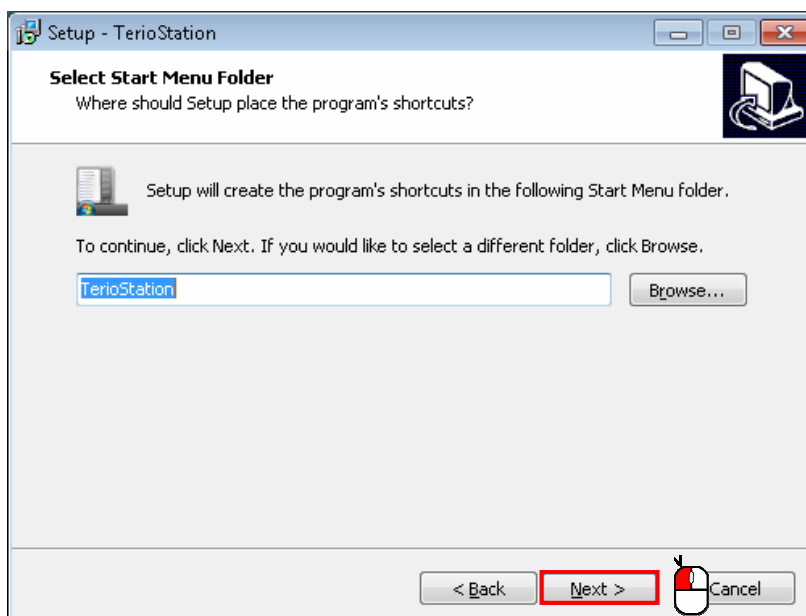
\*If the recorded IP address does not match or no IP address is displayed, contact your network administrator.

12

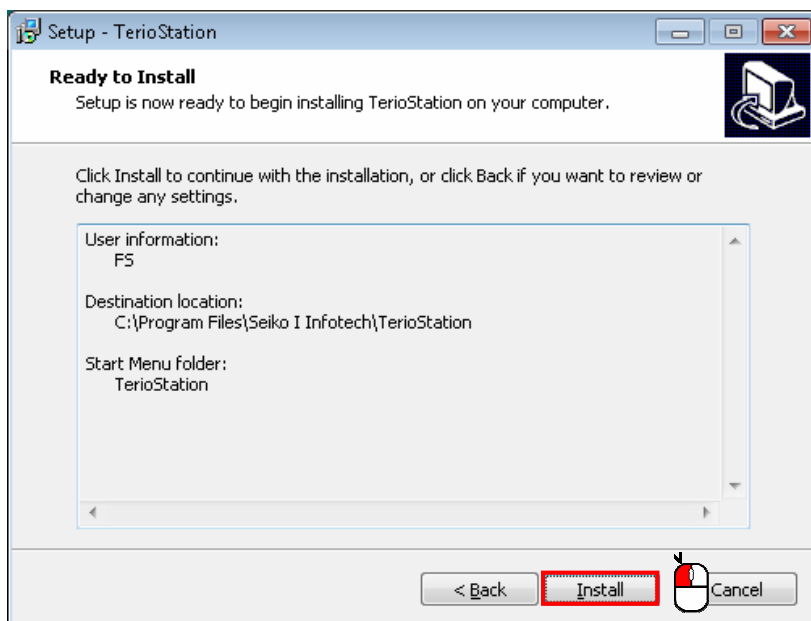
From the Printer list, select **LP-\*\*\*\*** ①, and then click **Next** ②.



13

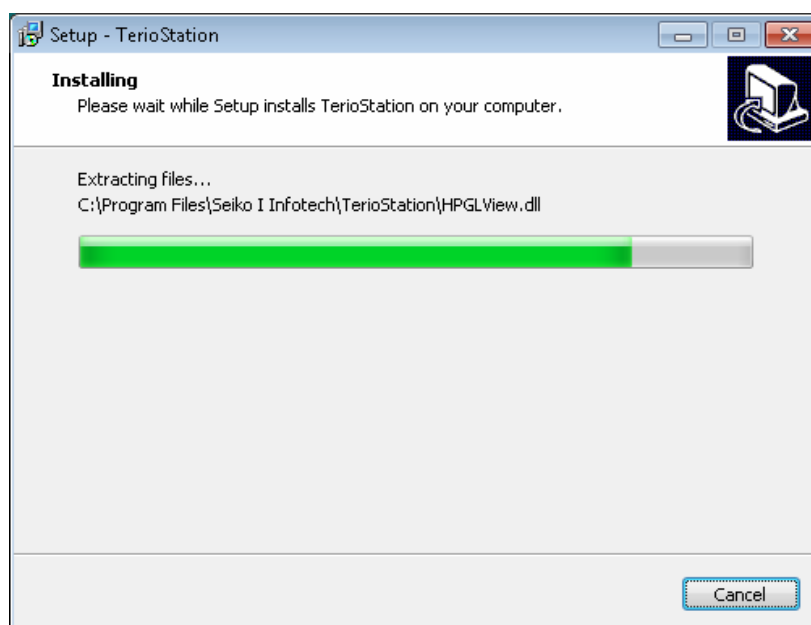
Click **Next**.

14

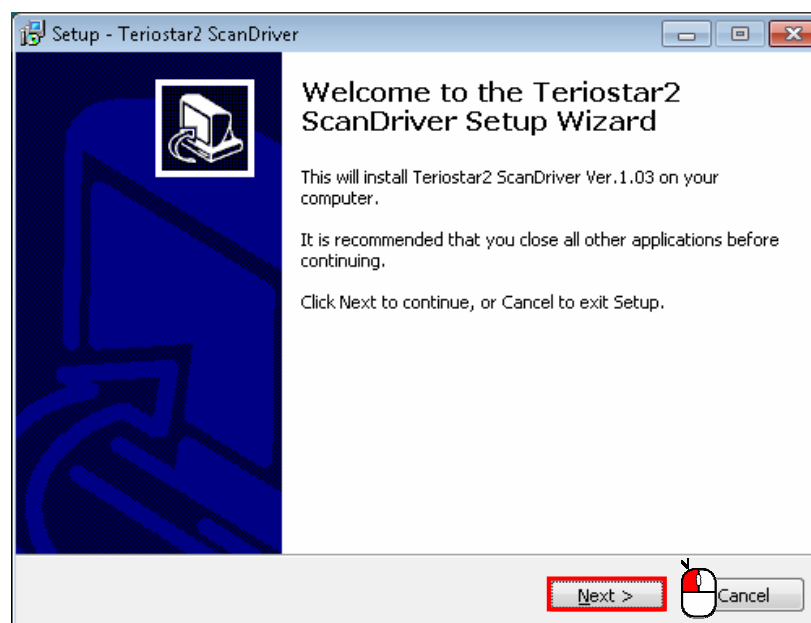
Click **Install**.

15

The following window appears.

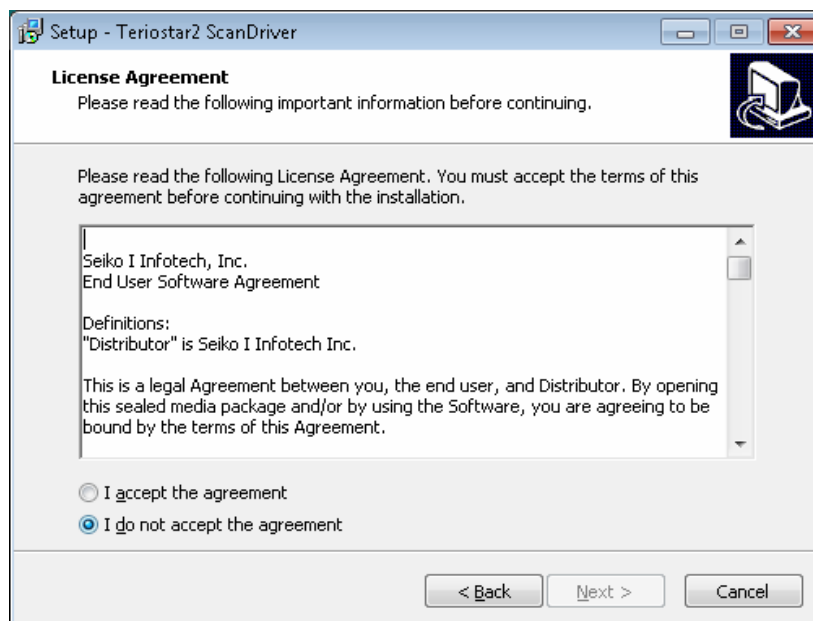


16

Click **Next**.

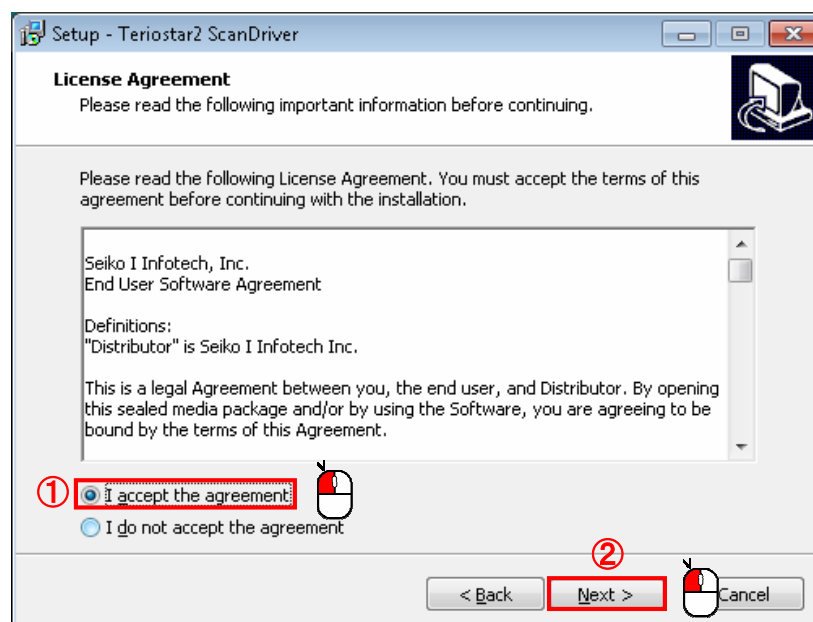
17

The following window appears.



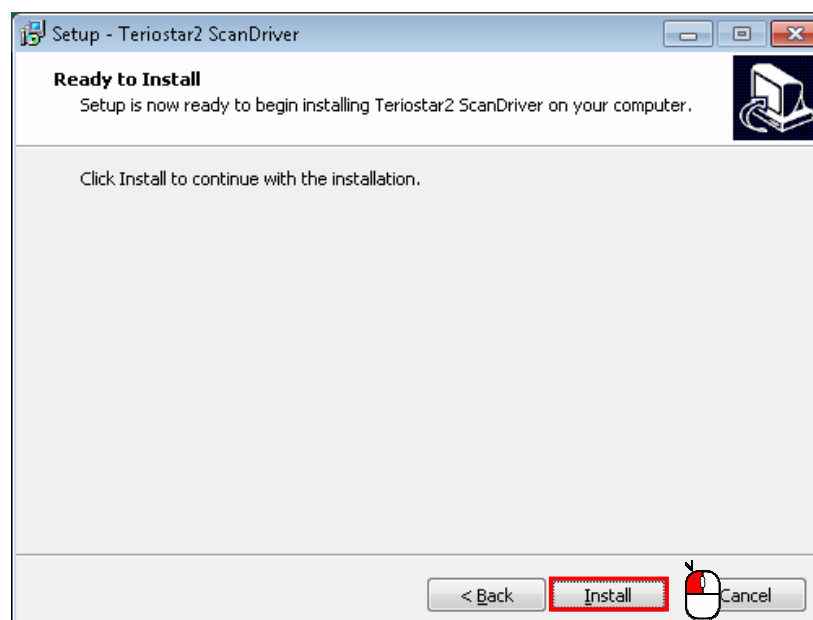
18

Select **I accept the agreement** ①, and then click **Next** ②.

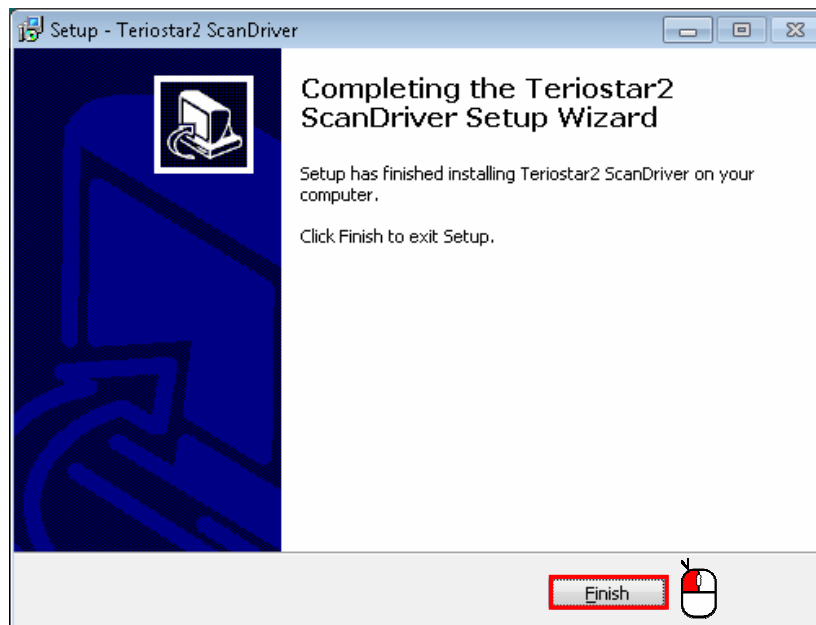


19

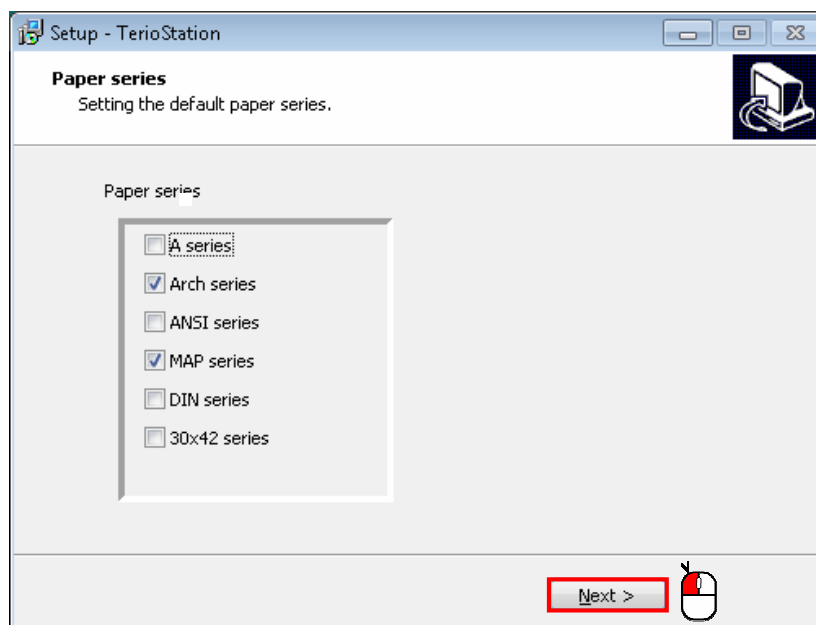
Click **Install**.



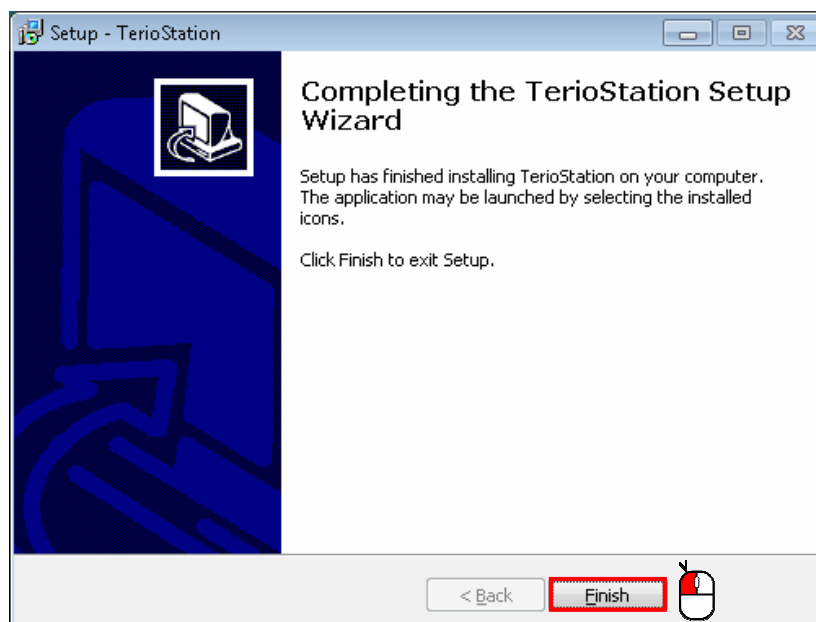
20

Click **Finish**.

21

Click **Next**.

22

Click **Finish**.

# Initial configuration of TerioStation

1

Registering a printer

---

2

Setting scanner preferences

---

3

Configuring Adobe Reader



# Registering a printer

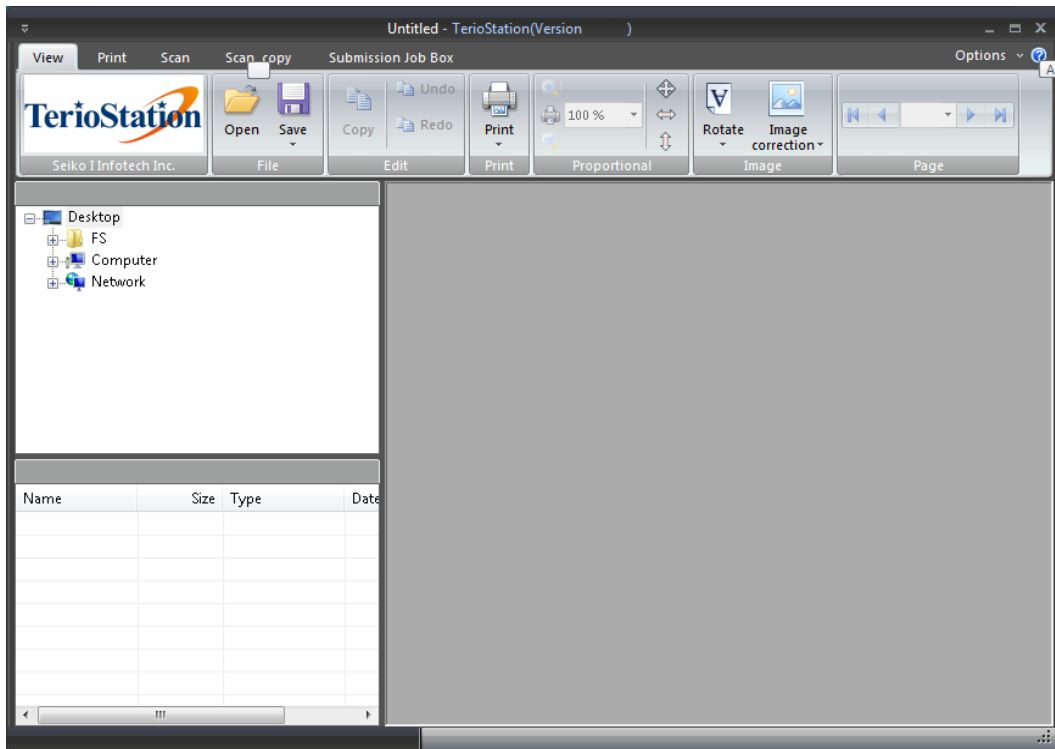
1

Double-click the TerioStation icon on the computer.



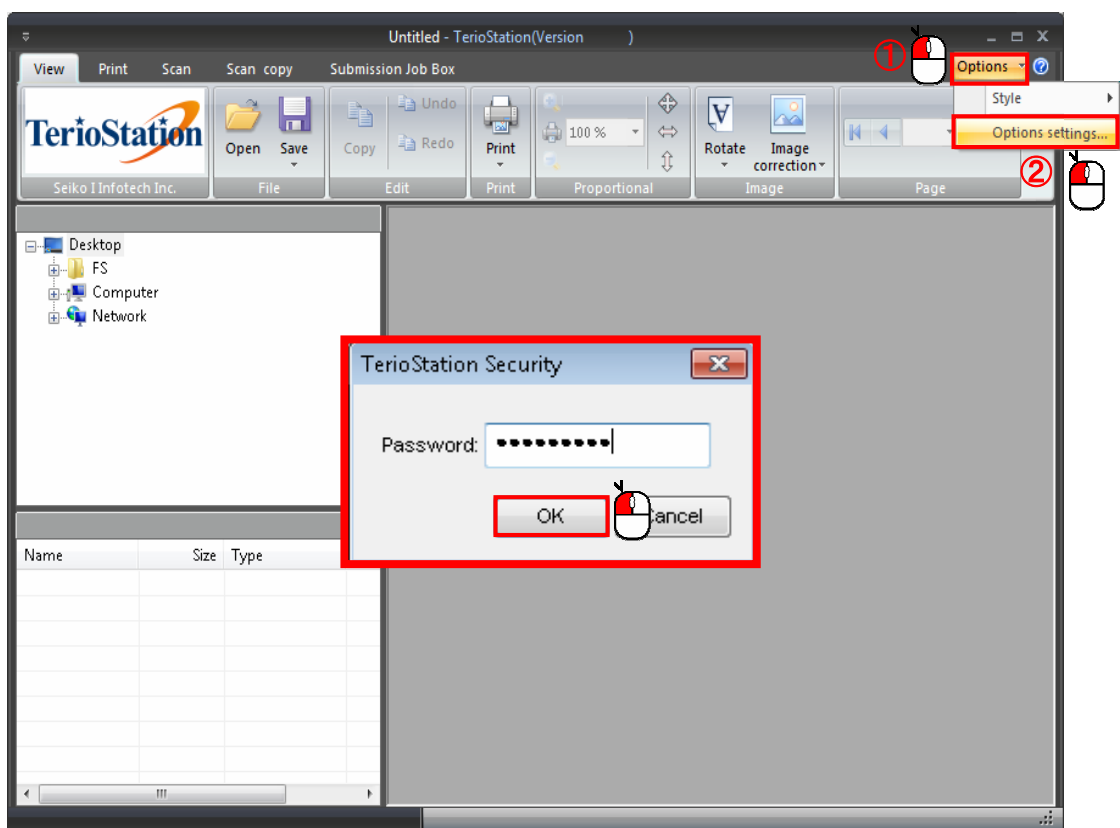
2

The following window appears.



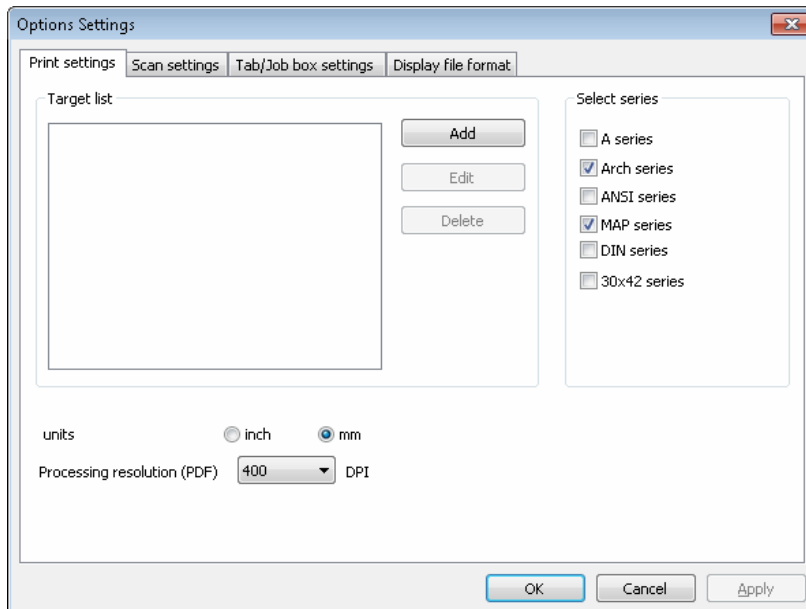
3

Click **Options** ①, and then click **Options settings** ②. If the security function is being used, a password entry dialog box like the one below appears. Type the password, and then click **OK**.



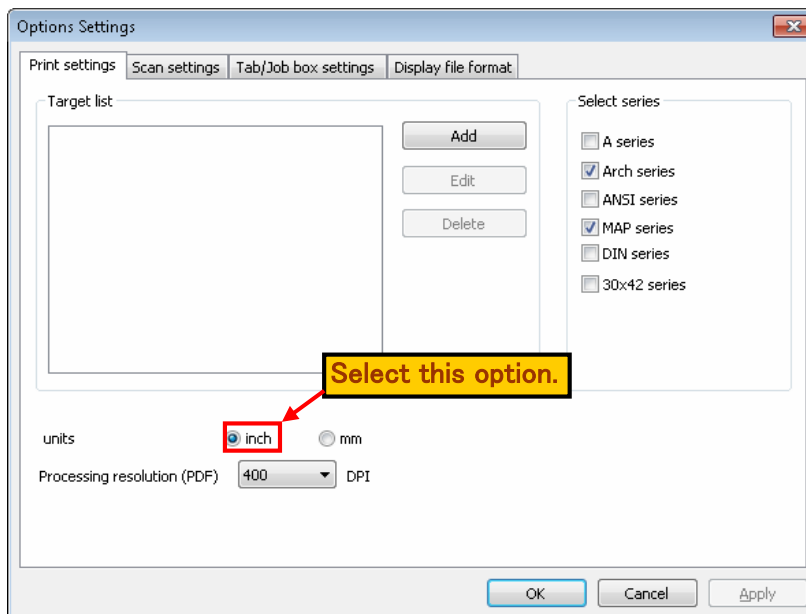
4

The following window appears.



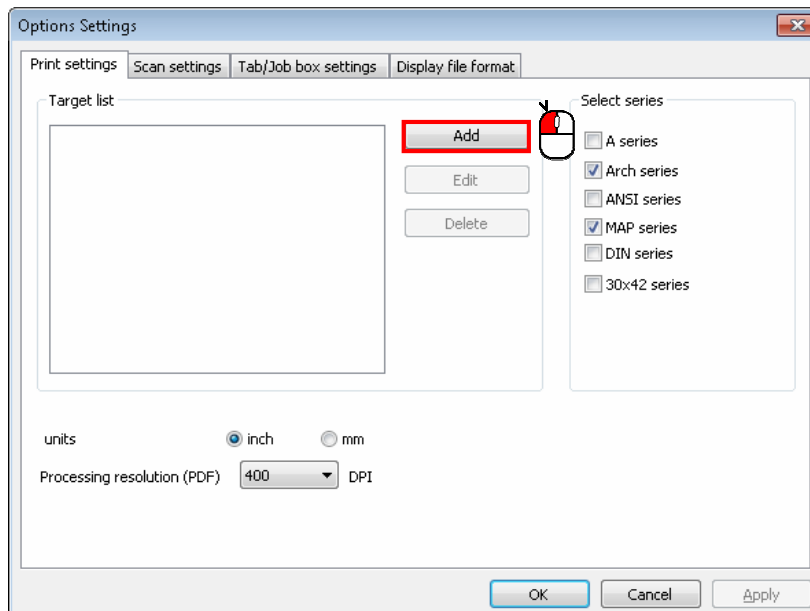
5

Configure the settings as shown in the figure below.



6

Click **Add**.



7

The following window appears.

8

Type a name of your choosing in the **Target name** field.

Example:  
LP-1030 or LP-2050

9

Select **Printer driver**.

10

Target settings

Target name(N): LP-1030

Advanced

Mode(M): ☐ XPT ☐ lpr ☒ Printer driver

XPT/lpr settings

IP Address(I): 192.169.1.100

Printer queue(Q): LP02

Resolution at output: 300 DPI

☐ Send TIFF files directly

Equipment model: default

Printer driver settings

Printer name(D): Microsoft XPS Document Writer ▼

Fax

Microsoft XPS Document Writer

SII LP-1020 (C2 VR)2R

SII Teriostar LP-1030

SII Teriostar LP-2050

OK Cancel

Click the ▼ button.  
(A list of printer names appears.)

11

Select OKI Teriostar LP-1030 or OKI Teriostar LP-2050.

Target settings

Target name(N): LP-1030

Advanced

Mode(M): ☐ XPT ☐ lpr ☒ Printer driver

XPT/lpr settings

IP Address(I): 192.169.1.100

Printer queue(Q): LP02

Resolution at output: 300 DPI

☐ Send TIFF files directly

Equipment model: default

Printer driver settings

Printer name(D): SII Teriostar LP-1030

OK Cancel

12

Target settings

Target name(N): LP-1030

Advanced

Mode(M): ☐ XPT ☐ lpr ☒ Printer driver

XPT/lpr settings

IP Address(I): 192.169.1.100

Printer queue(Q): LP02

Resolution at output: 300 DPI

☐ Send TIFF files directly

Equipment model: default

Printer driver settings

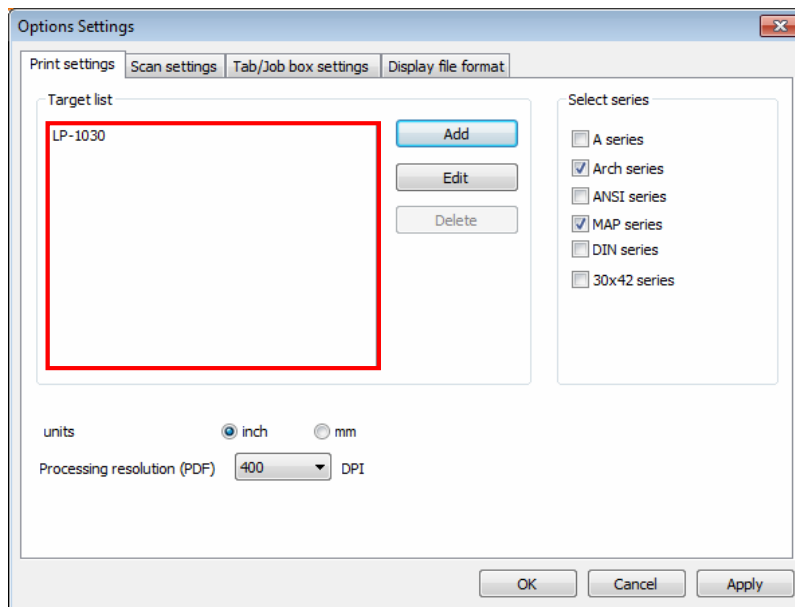
Printer name(D): SII Teriostar LP-1030

OK Cancel

Click OK.

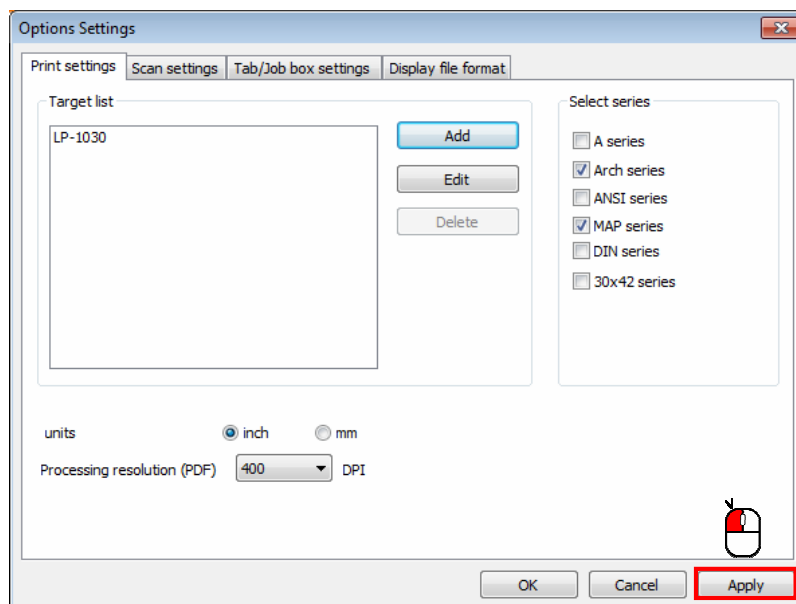
13

LP-1030 or LP-2050 appears in the **Target list**.



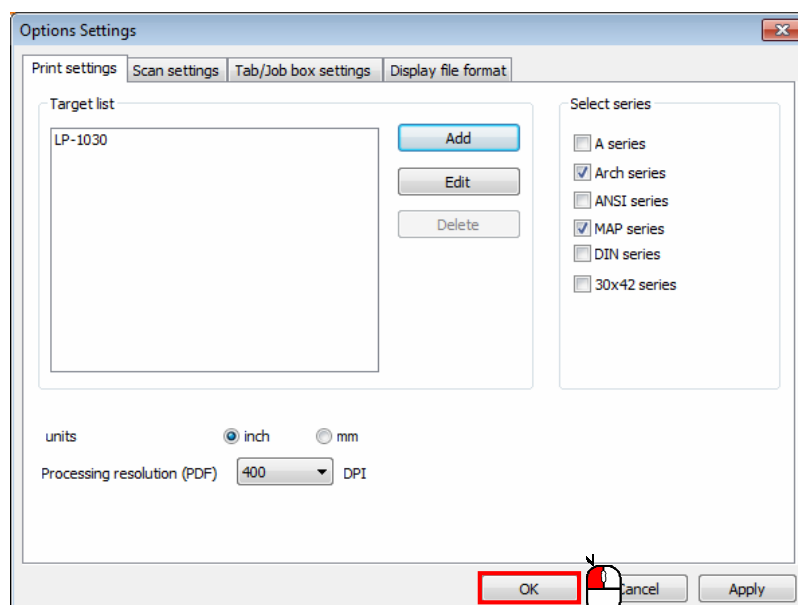
14

Click **Apply**.



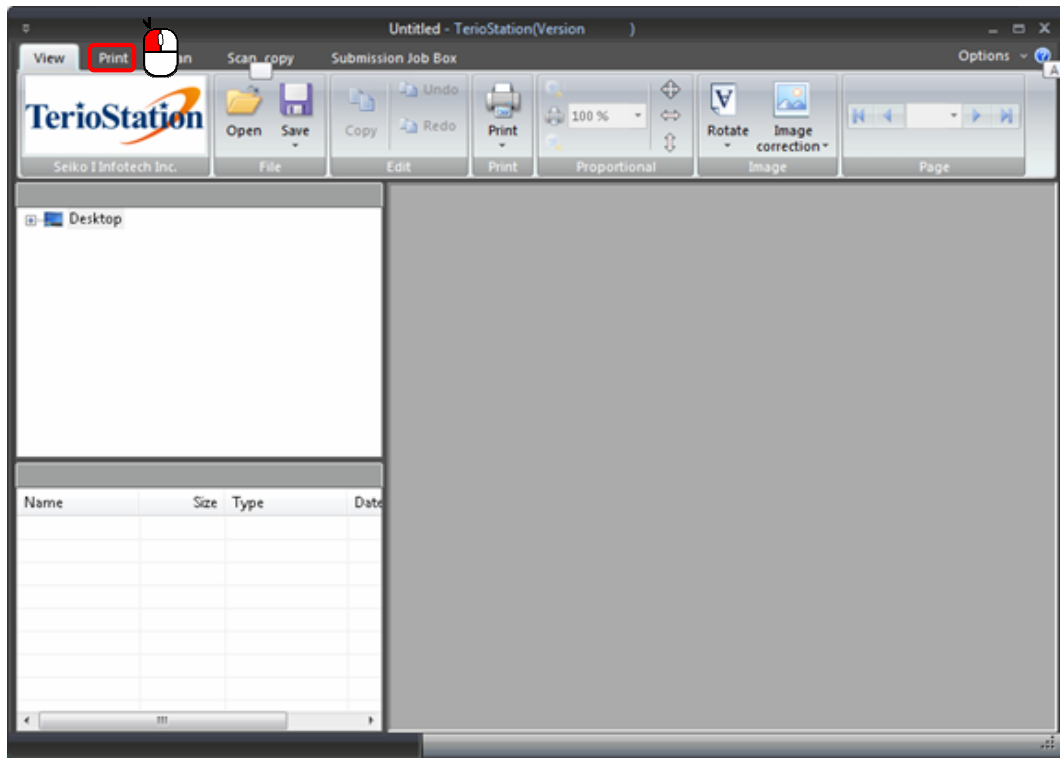
15

Click **OK**.



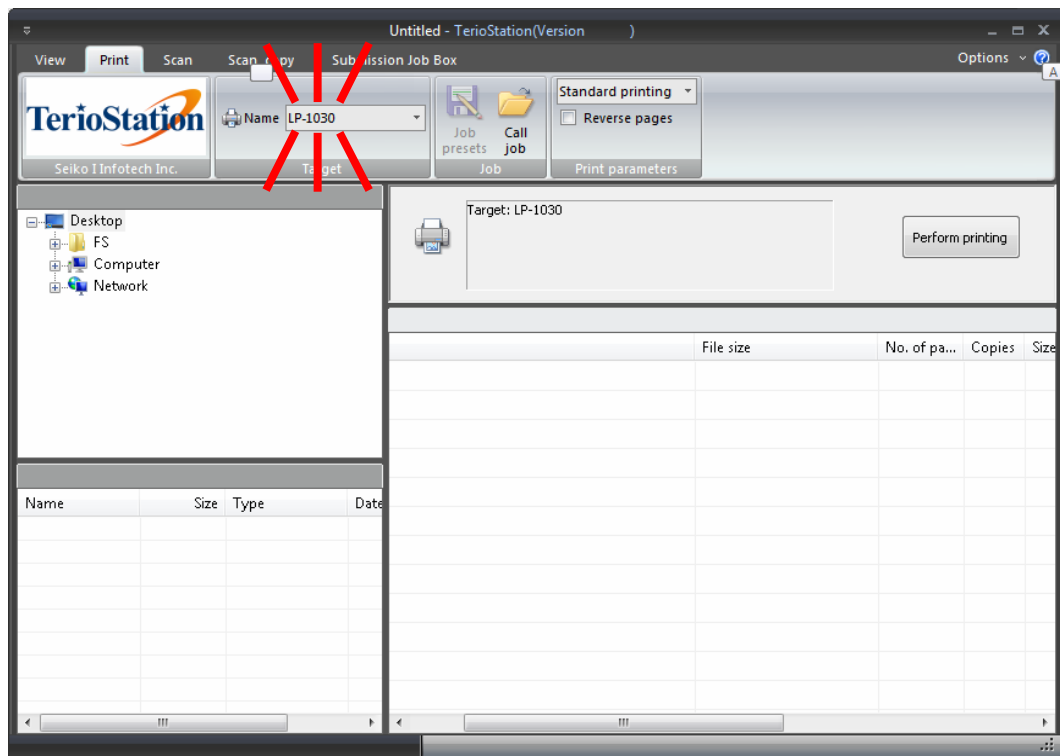
16

The following window appears. Click **Print**.



17

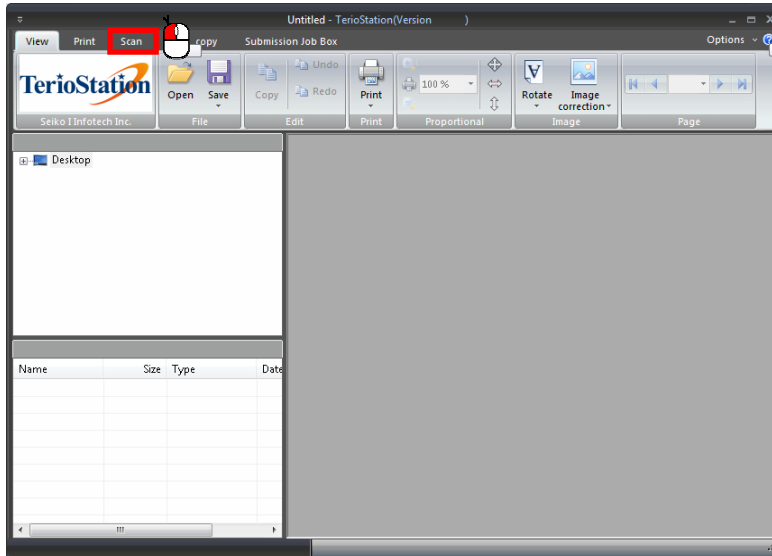
Confirm that **LP-1030** appears in the **Name** field.



# Setting TerioStation scanner preferences

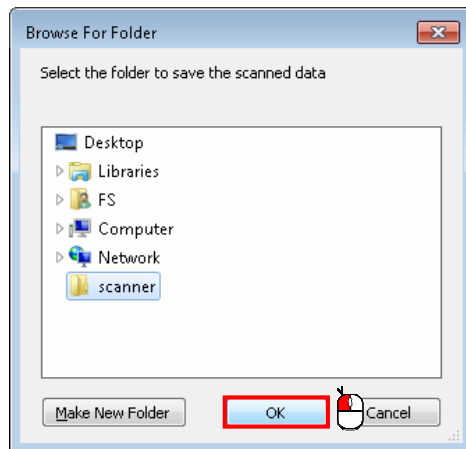
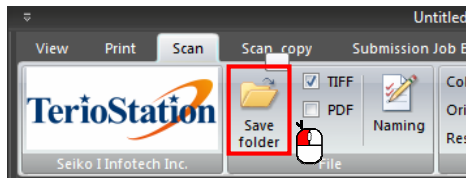
1

Click **Scan**.



2

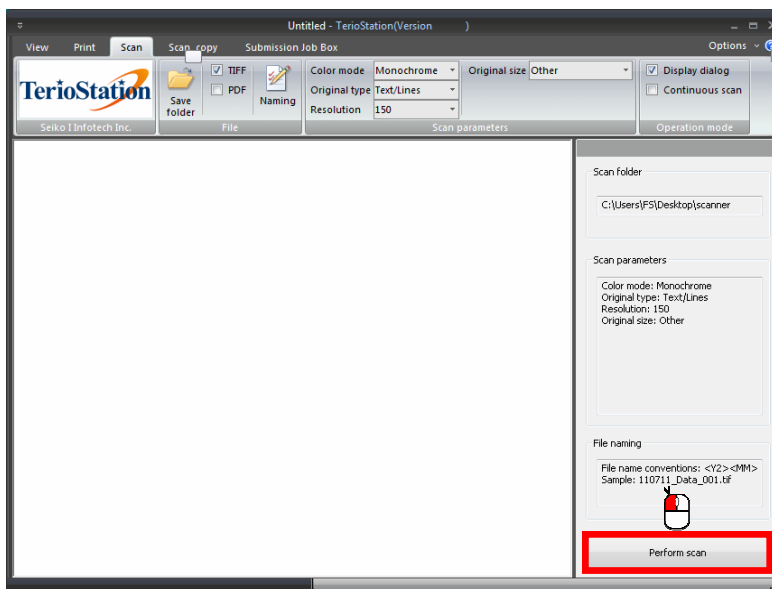
Click **Save Folder**.



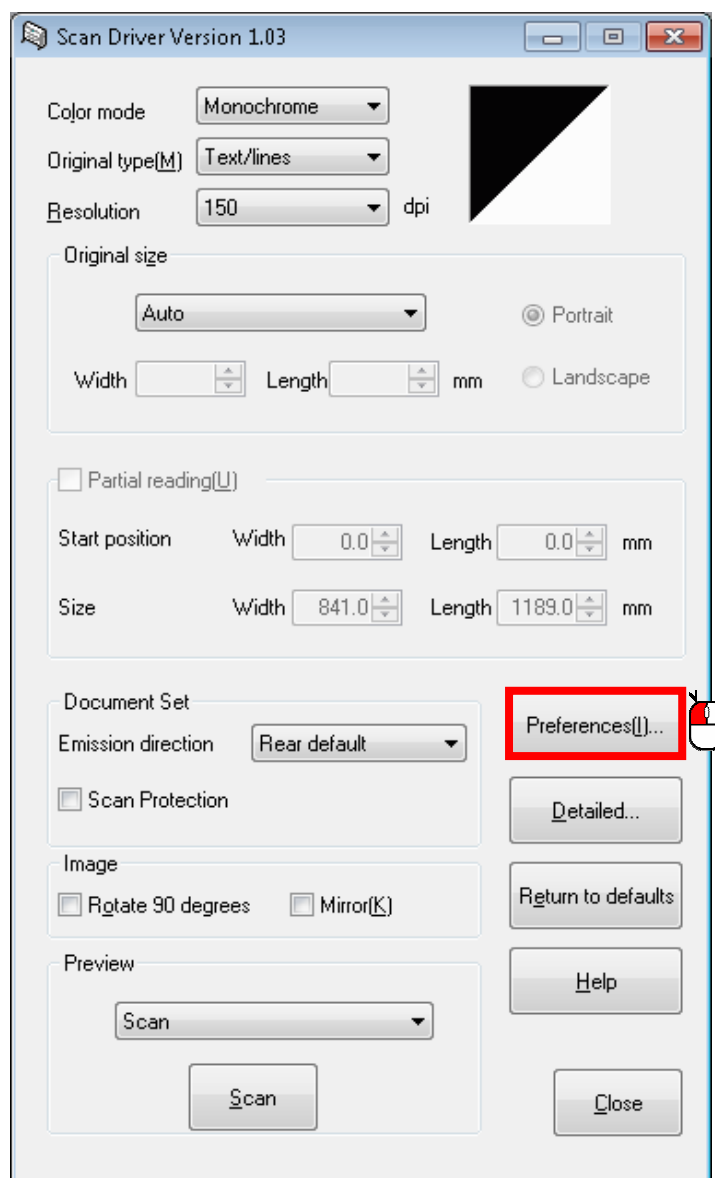
Select the destination folder to save the scanned data. Click **OK**.

3

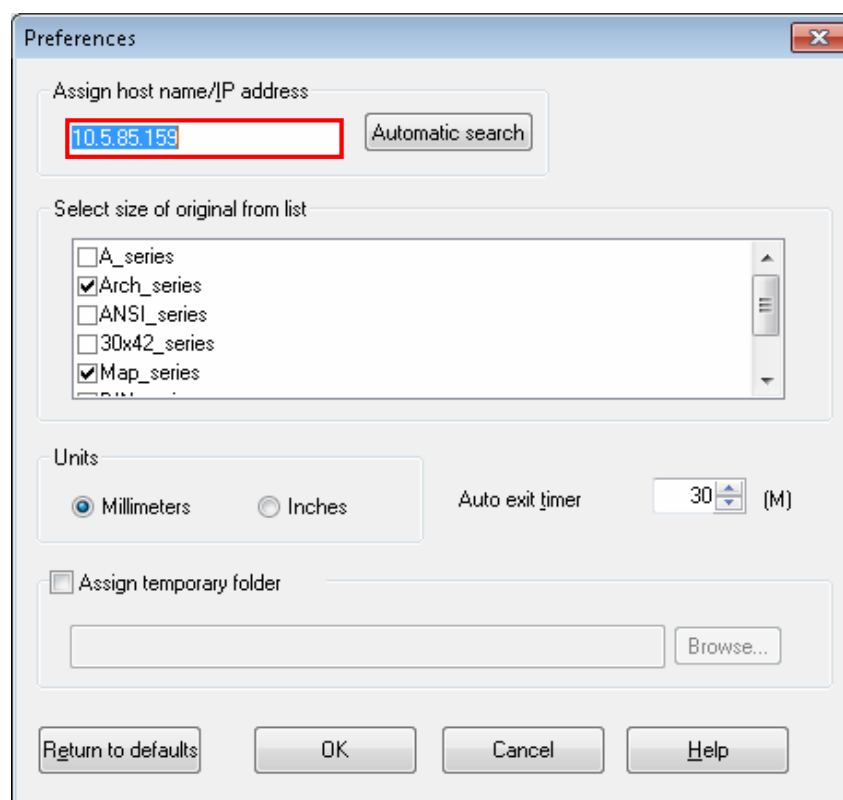
Click **Perform scan**.



4

Click **Preferences**.

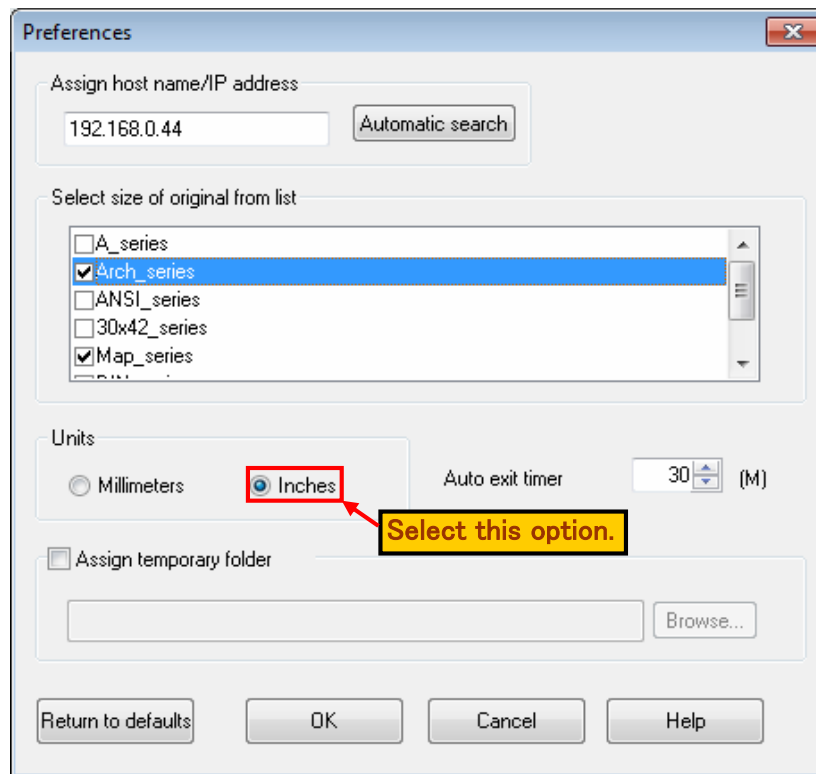
5

Confirm that an address appears in the **Assign host name/IP address** field.



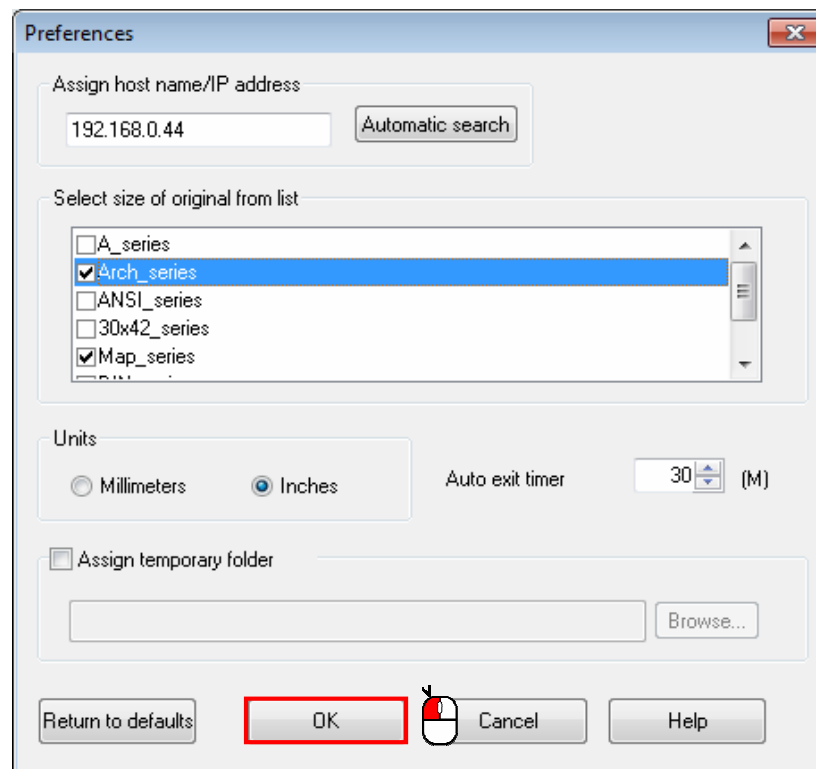
6

Configure the settings as shown in the figure below.



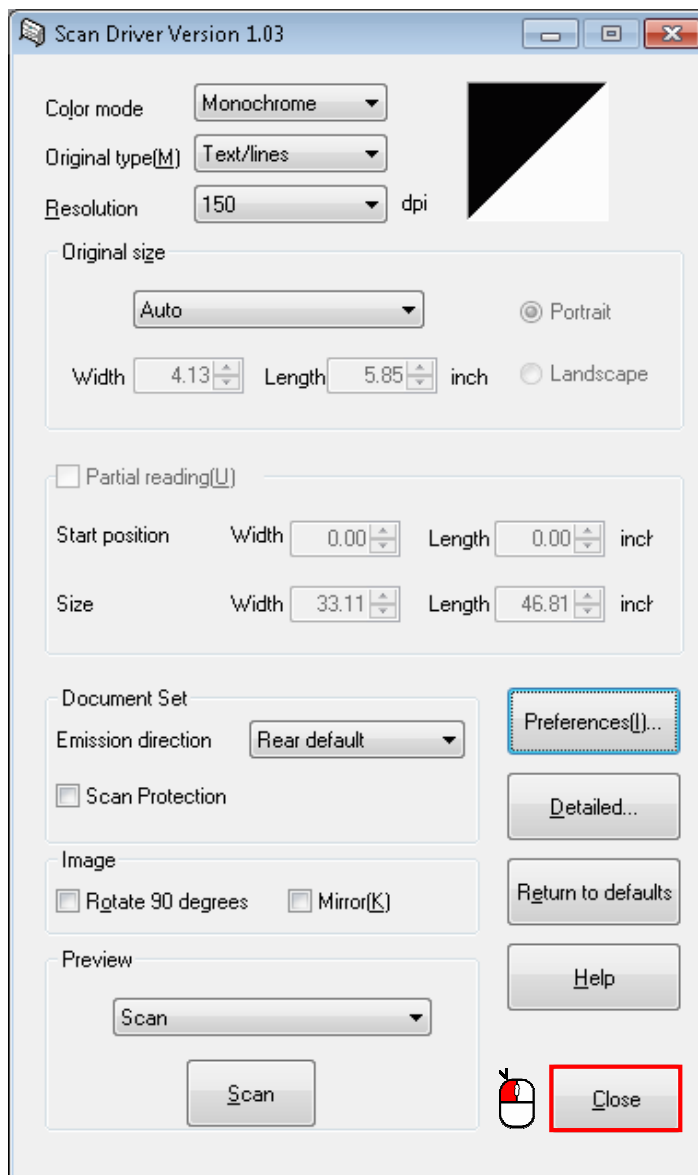
7

Click **OK**.



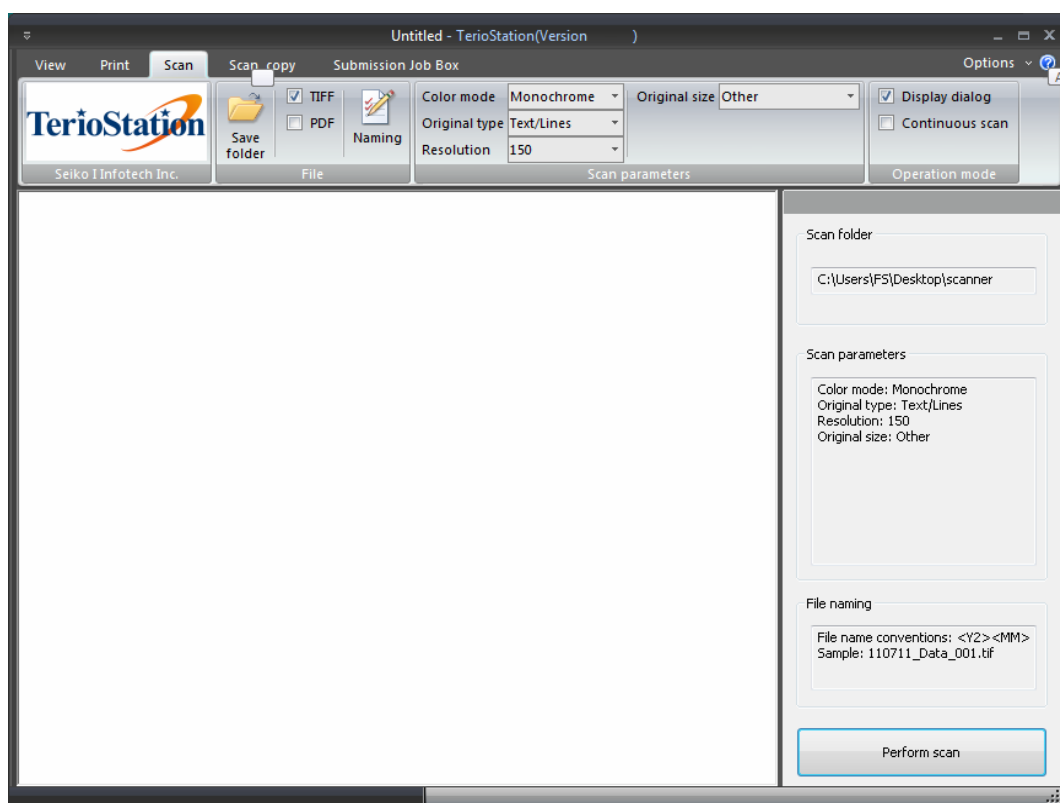
8

The following dialog box appears. Click **Close**.



9

The following window appears. The procedure is complete.

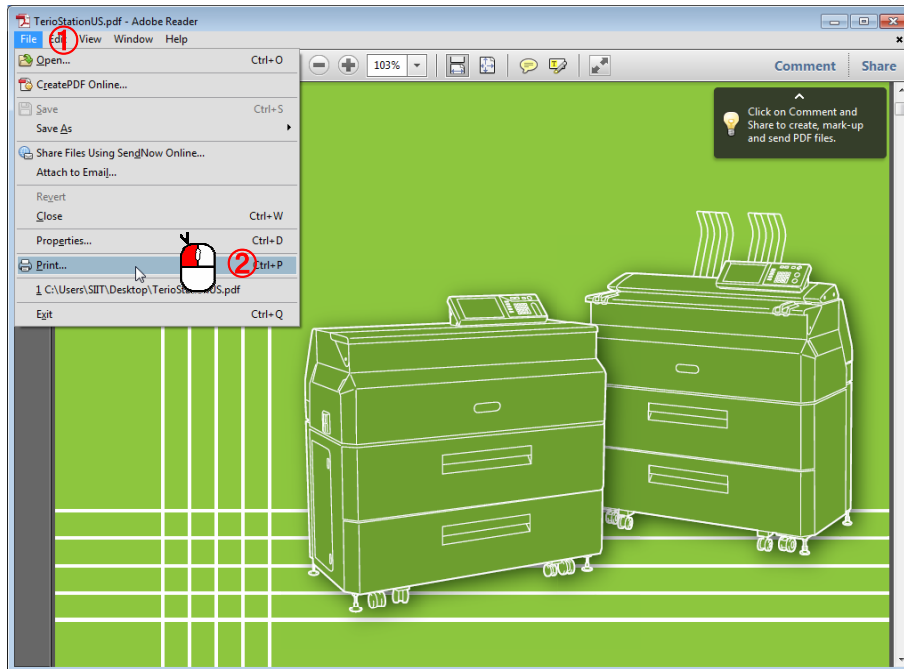


# Configuring Adobe Reader

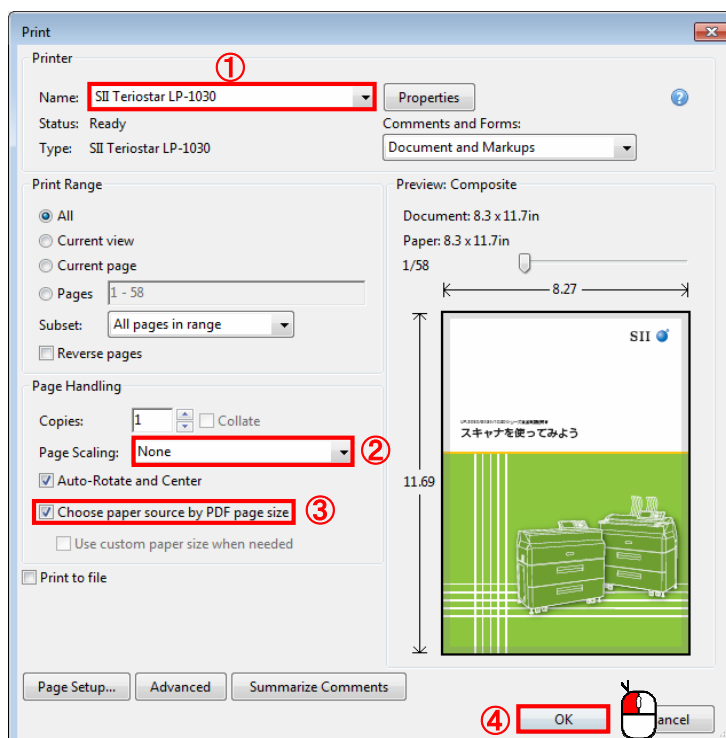
1

Open a PDF file, and then configure the print settings.

Click **File** ①, and then click **Print** ② to open the print settings.



2



① Select a printer driver.

② Set **Page Scaling** to **None**.

③ Select the **Choose paper source by PDF page size** check box.

④ Click **OK** to start printing.

## Configuration

1

Configuring the printer's IP

*See Appendix 1*

2

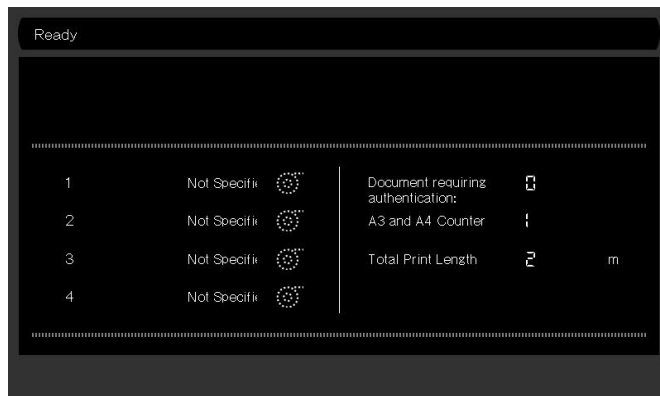
Installing the printer driver

*See Appendix 2*

## Configuring the printer's IP address

1

Confirm that printer has been switched on and is running.



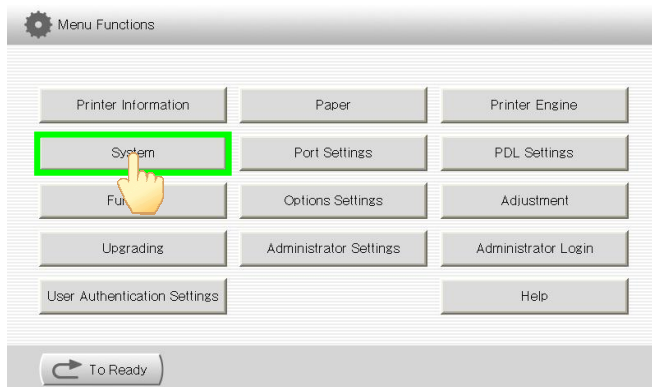
2

On the operation panel, press **MENU**.



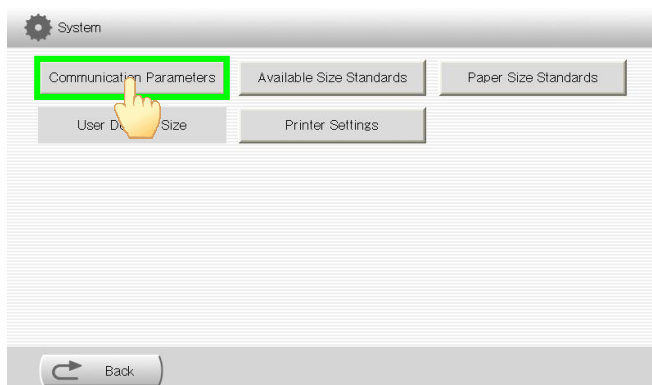
3

After the printer IP address is determined, input it into the printer.



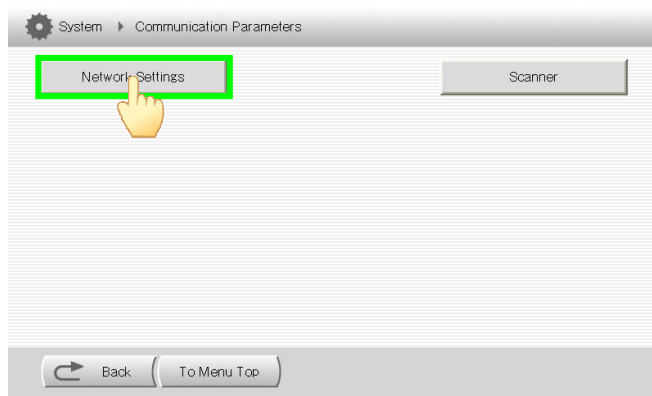
On the screen, press **System**.

4



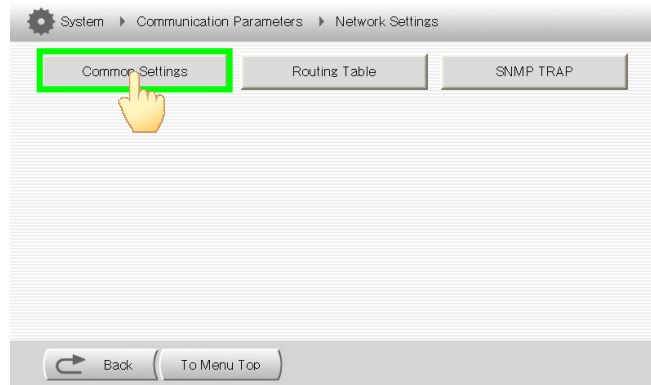
On the screen, press **Communication Parameters**.

5



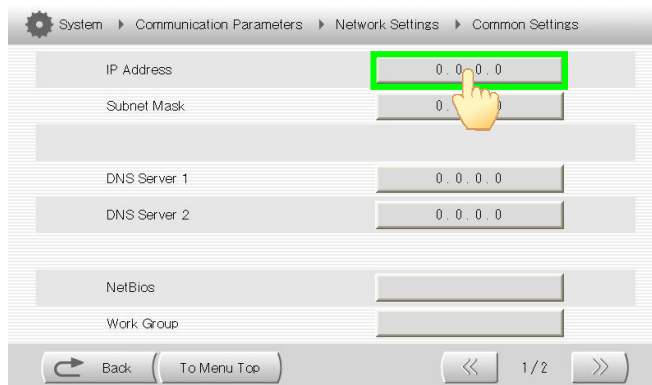
On the screen, press **Network Settings**.

6



On the screen, press **Common Settings**.

7



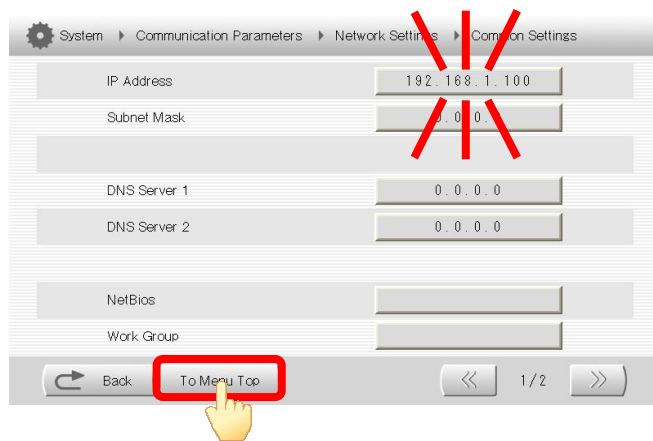
On the screen, press the **IP Address** number.

8



Use the keypad to type the IP address into the four sections on the screen. After typing the IP address, press the **Enter** key.

9



Confirm that the entered IP address is correct.  
Press **To Menu Top**.

10

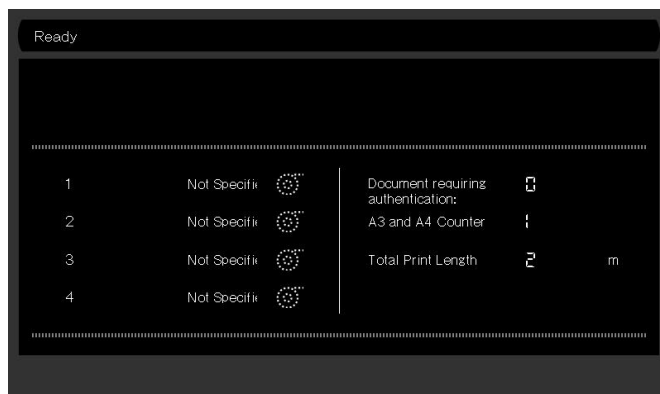


Configuration is complete. The printer restarts.

## Installing the printer driver

1

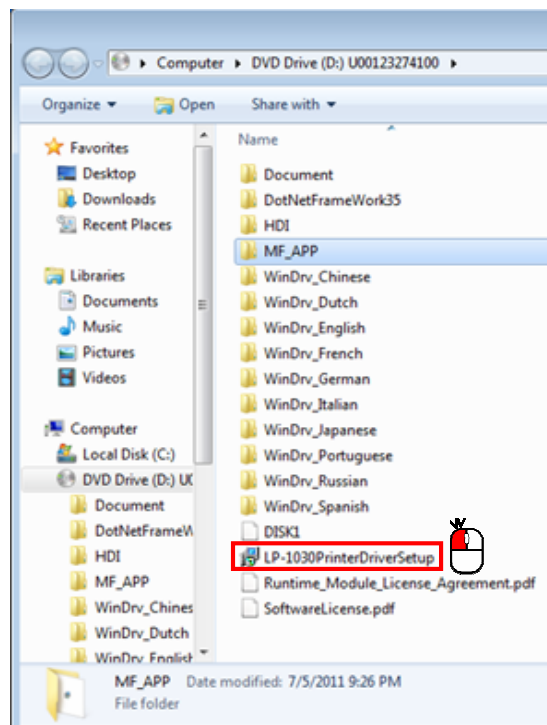
Confirm that printer has been switched on and is running.



\*"Ready" is displayed on screen.

2

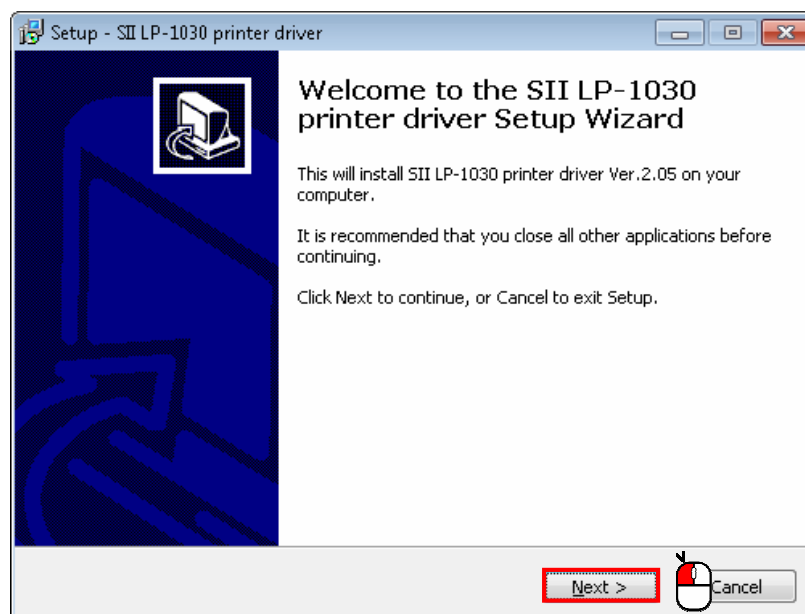
Insert the installation CD into the drive. Double-click the drive folder.



Inside the folder, double-click the file named **PrinterDriverSetup.exe**.

3

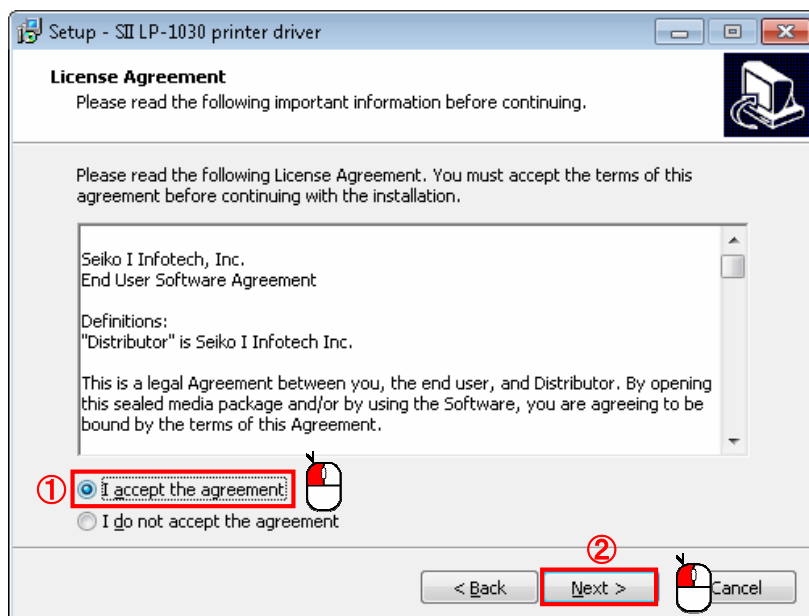
Installation starts. Click **Next**.





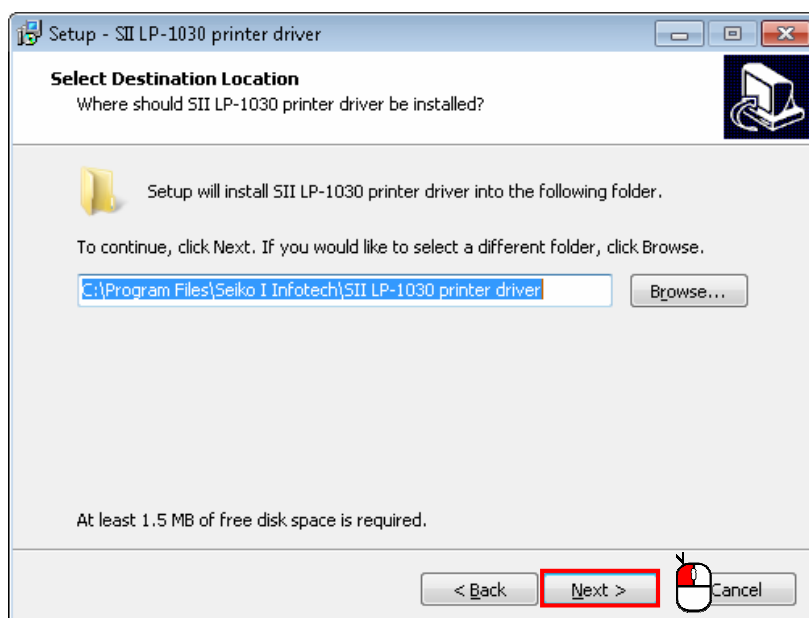
4

Select **I accept the agreement** ①, and then click **Next** ②.



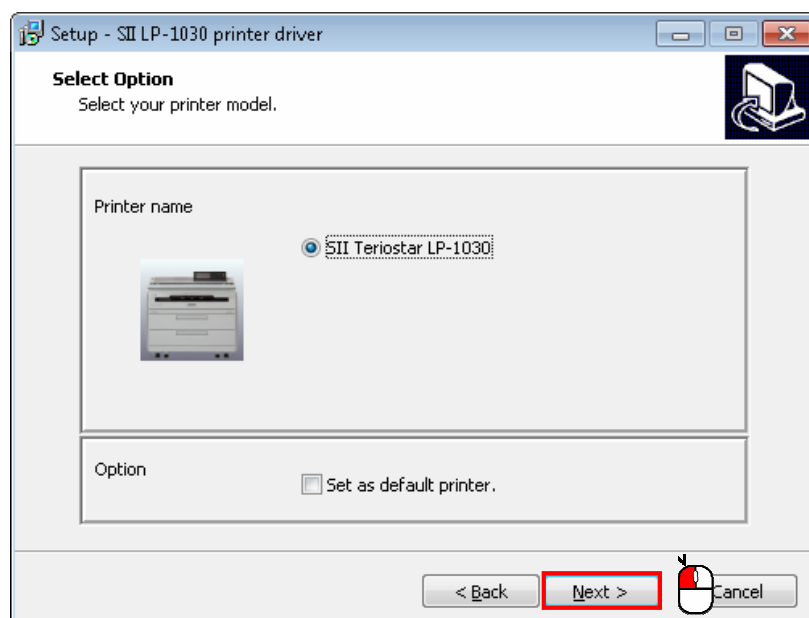
5

To use the default destination location, click **Next**.

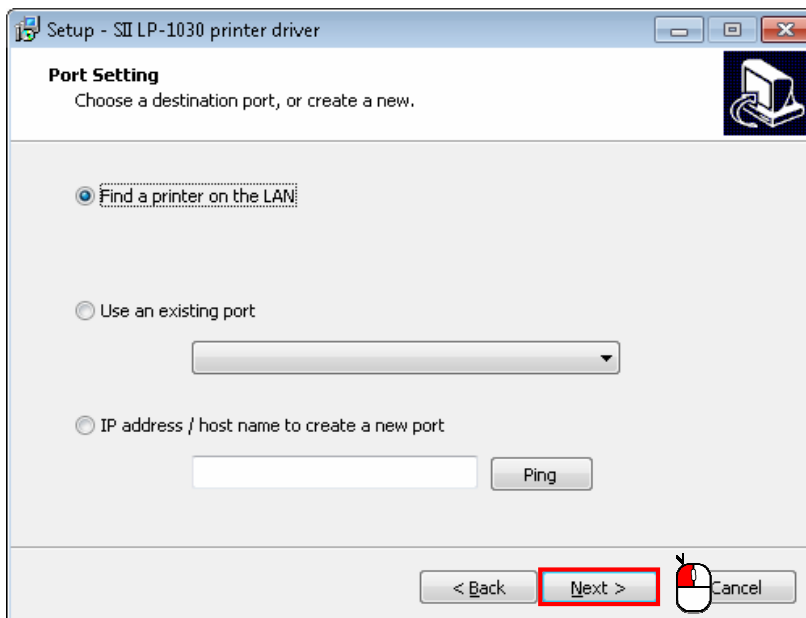


6

Click **Next**.

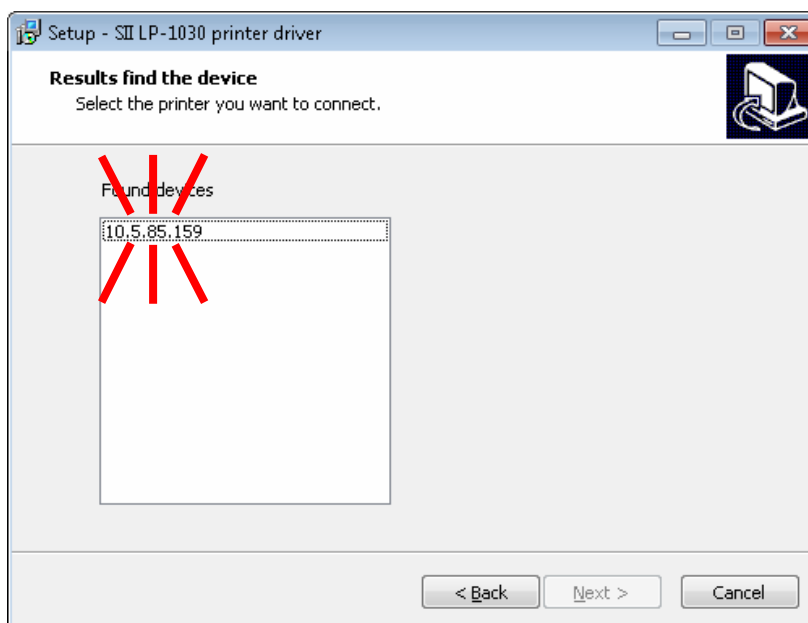


7

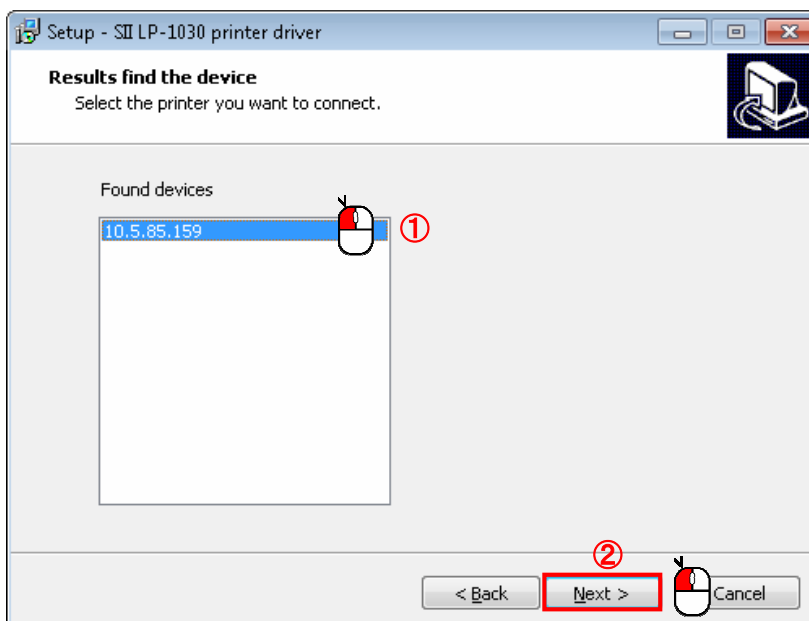
Click **Next**.

8

The printer's IP address is displayed.

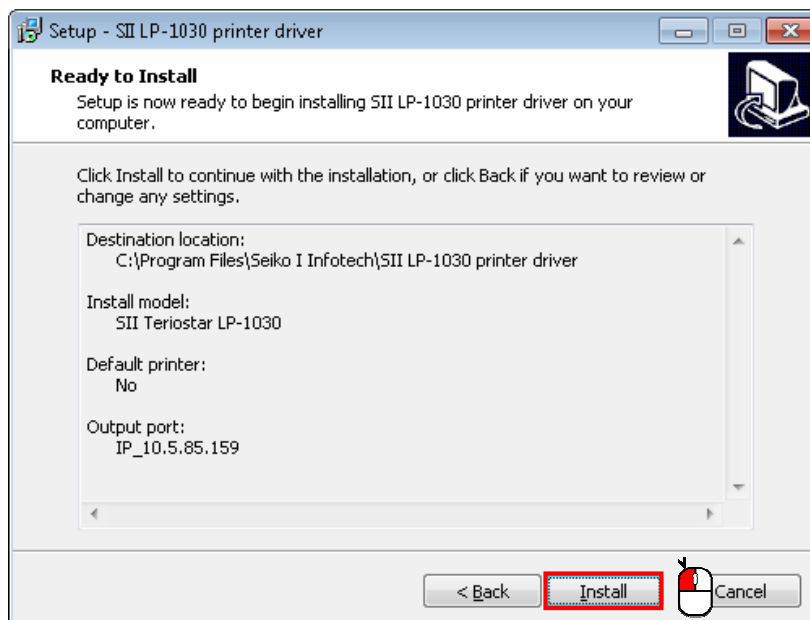


9

Click the printer's IP address ①, and then click **Next** ②.

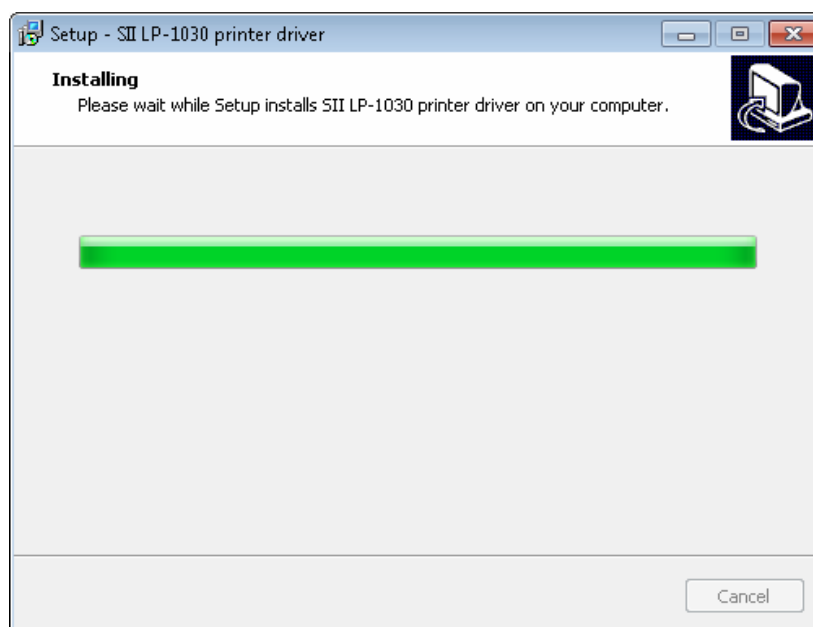
10

Confirm that the settings are correct. Click **Install**.



11

The following window appears.



12

When the following message appears, installation is complete. Click **Finish**.

